

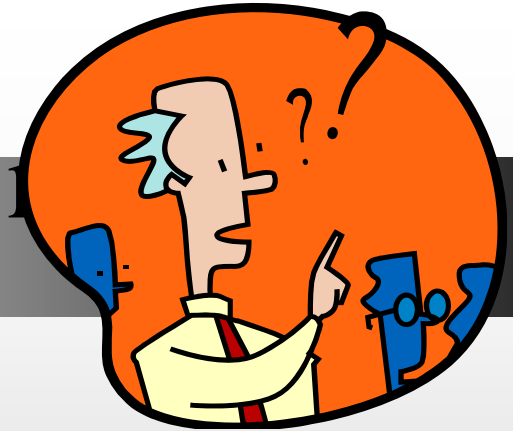
Forest County All-Hazards Mitigation Plan – Update

Oversight Committee Kick-Off Meeting

September 8, 2014

North Central Wisconsin Regional
Planning Commission

Why does Forest County do this?



- **Protect health and safety of residents from the impacts of hazards**
- **Prevent or reduce damages caused by hazards**
- **Disaster Mitigation Act of 2000 – To become eligible for certain FEMA grants**
- **Federal / State aid is insufficient**

Forest County Disasters



- **In 2000 Severe Storms / Flooding resulted in a Presidential Disaster Declaration for southern Forest County.**
- **June 2010 Thunderstorm Winds knocked down miles of power line and many trees blocking roads and damaging homes in southern half of the County (Nashville)**
- **April 2011 2-Tornados: Armstrong Creek and Argonne caused \$250,000 in damage.**
- **February 2012 Winter Storm drops 19 inches near Laona & 17.9 near Crandon**

DMA2K



- **Disaster Mitigation Act of 2000**
- **PL 106-390 signed into law 10/30/00**
- **Established a natural disaster hazard mitigation program**
- **Must have plan to be eligible for:**
 - **Pre-Disaster Mitigation Grant Program**
 - **Flood Mitigation Assistance Program**
 - **Hazard Mitigation Assistance Program**

Mitigation



- **Any action taken to eliminate or reduce the long-term risk to human life and property from natural and technological hazards – *Wisconsin Emergency Management (WEM)***

Mitigation

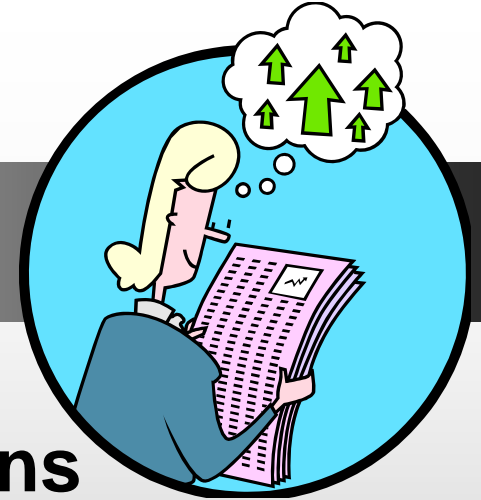


- **Is one of the four phases of emergency management**
- **Can occur before, during or after a disaster and in all phases of the emergency management cycle**
- **Is the only phase which can BREAK the repetitive damage cycle**

For every **dollar spent** on mitigation, **\$4 is saved** in future damages (WEM)

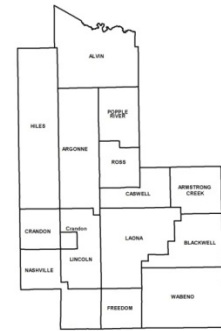


Benefits



- **Protect the health/safety of citizens**
- **Protect Property and Infrastructure**
- **Preserve or expand tax base**
- **Attract or retain business/industry**
- **Revitalize a depressed area**
- **Enhance recreation and tourism**
- **Increase community pride & improve quality of life**
- **Save tax dollars**

Local Mitigation Planning



- Describe actions to mitigate hazards, risks and vulnerabilities
- Establish strategy to implement those actions
- Pre-identify projects to ensure comprehensive, integrated approach to hazard reduction

5 Parts to Plan = Local Planning Elements

- **Planning Process**
- **Planning Area**
- **Risk Assessment**
- **Mitigation Strategy**
- **Plan Maintenance Process and Adoption**



Planning Process

- **Description of planning process**
 - **Committee involvement**
 - **Local government involvement**
 - **Neighboring Community Involvement**
 - **Agency involvement**
 - **Public review**
 - **Existing plans / reports**



Planning Area (Inventory and Trends)

- **Demographics & Economic Profile**
- **Geography**
- **Land Use**
 - **Development Patterns**
 - **Community Facilities**
 - **Utilities**



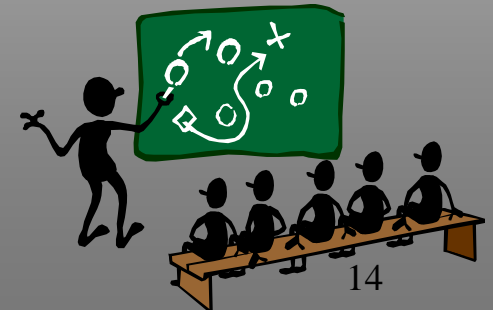
Risk Assessment

- Hazard Identification
- Past hazard events
- Probability of future events
- Type / # of existing / future buildings and infrastructure at risk for each hazard
- Potential impacts on residents and economy
- Potential dollar losses on vulnerable structures
- Land uses and development trends



Mitigation Strategies

- **Mitigation goals and objectives**
- **Strategies, programs and actions to reduce or avoid vulnerabilities to hazards**
- **Prioritize specific cost effective mitigation projects and actions**
- **Compliance with NFIP**
- **Implementation of the plan**



Plan Maintenance Process and Adoption

- **Evaluating and updating method and schedule for plan**
 - **UPDATE IS REQUIRED EVERY 5 YEARS**
- **It is understood that not all action projects will be achieved due to changing conditions (political, fiscal, etc.)**
- **Documentation of adoption (by resolution)**



Review Process



- **Complete the Plan**
 - The Plan must meet all of the criteria per Section 201.6
- **Submit the draft plan to WEM for pre-review**
- **Based on WEM's review, make changes and resubmit for final review**
- **If final plan meets criteria, county and local units adopt plan by resolution**
- **WEM recommends approval to FEMA**

So, where do you all fit in?



- **Role of Oversight Committee:**
 - **Oversight of plan development**
 - **Provide consensus and priority on hazards and implementation strategies**
 - **Input : representing both your agency or area and the best interests of Forest County as a whole**

North Central Wisconsin Regional Planning Commission

**210 McClellan Street; Suite 210
Wausau, WI 54403**

Phone: 715-849-5510

Email: dlandeau@ncwrpc.org

Web site: www.ncwrpc.org

