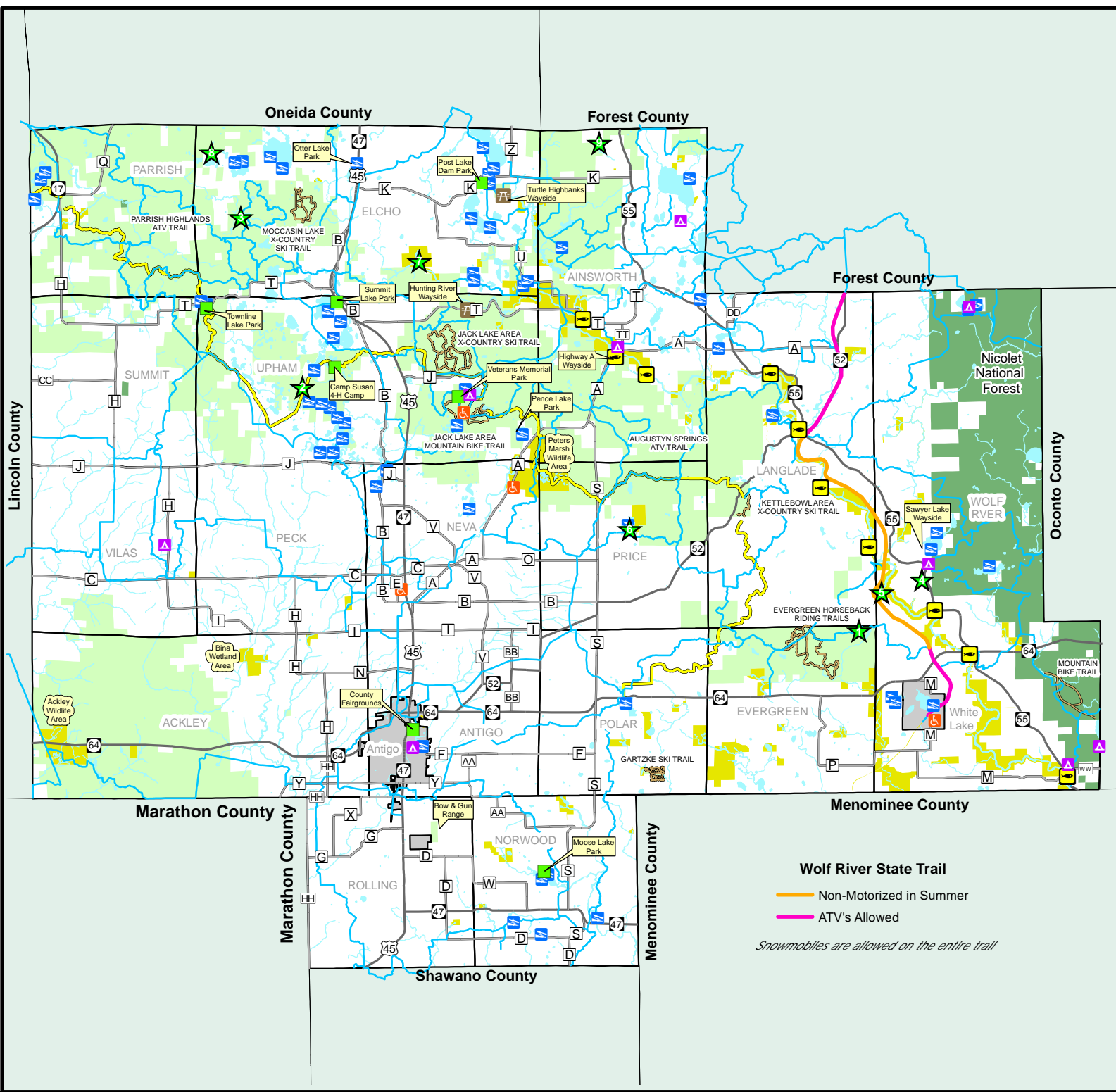


Map 2 Outdoor Recreation

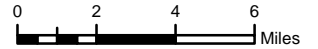
Langlade County, Wisconsin



- Town Boundary
- US & State Highways
- County Highways
- Ice Age Trail
- Snowmobile Trails
- Trails
- Water
- Handicap Fishing Access
- County Waysides
- Campgrounds
- Boat Launch
- Trout Stream Access
- County Facilities
- State Land
- Federal Land
- County Lands

- ★ State Natural Areas
- | | |
|-----------------------------------|-------------------------|
| 1. Flora Spring Pond | 6. Lawrence Lake |
| 2. Bogus Swamp | 7. Hunting River Alders |
| 3. Monito Lake | 8. Kelly Linn Bog |
| 4. Bear Caves | 9. Swamp Creek Fen |
| 5. Oxbow Rapids, Upper Wolf River | |

Source: WI DNR, Langlade County, NCWRPC
 This map is neither a legally recorded map nor a survey of the actual boundary of any property depicted. This drawing is a compilation of records, information and data used for reference purposes only. NCWRPC is not responsible for any inaccuracies herein contained.



Wolf River State Trail
 — Non-Motorized in Summer
 — ATV's Allowed
Snowmobiles are allowed on the entire trail

Prepared by:

**North Central
 Wisconsin Regional
 Planning Commission**
 210 McClellan St., Suite 210, Wausau, WI 54403
 715-849-5510 - staff@ncwrpc.org - www.ncwrpc.org