

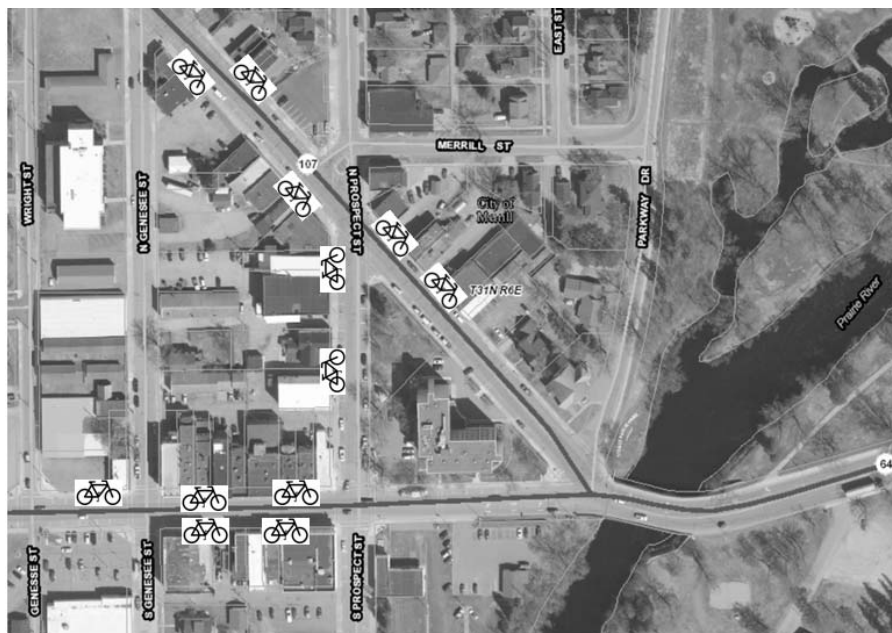
Proposed Downtown Bike Parking

Recommendations:


- Add bike parking, possibly designed/constructed by high school students, in downtown that meets the design guidelines in Merrill's Bike & Ped. Plan, and is located between the sidewalk and the street (see next page).



Picture: Lincoln County Land Records Viewer, 2015 Aerial Imagery



Picture: Lincoln County Land Records Viewer, 2015 Aerial Imagery

 = **Potential** general bike rack locations

Proposed Downtown Bike Parking

Use this diagram for locating bike racks between the sidewalk and the curb:

IS THERE ENOUGH ROOM FOR BIKE PARKING RACKS?

Layout for Hitch Type Bike Rack Installation
Between Curb and Sidewalk (Minimum Setbacks)

Hitch type bike rack

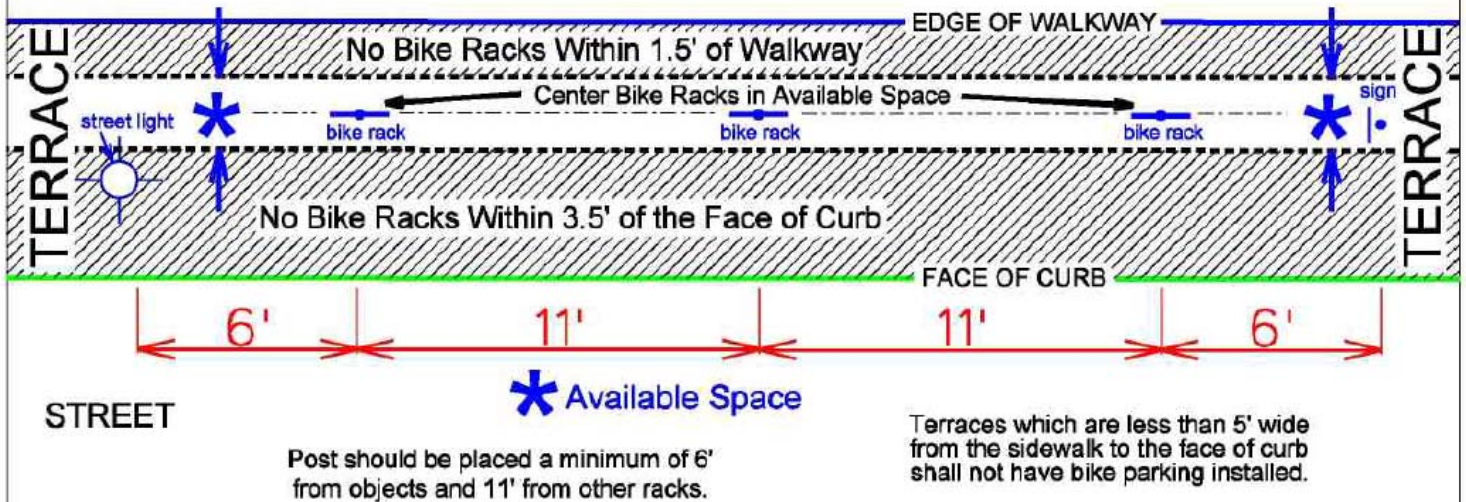


Connects to concrete or blacktop with four bolts

BUILDING OR RIGHT OF WAY LINE

WALKWAY

Sidewalks are at least 5' wide and may be wider in some locations.



Created by: Madison Traffic Engineering Department