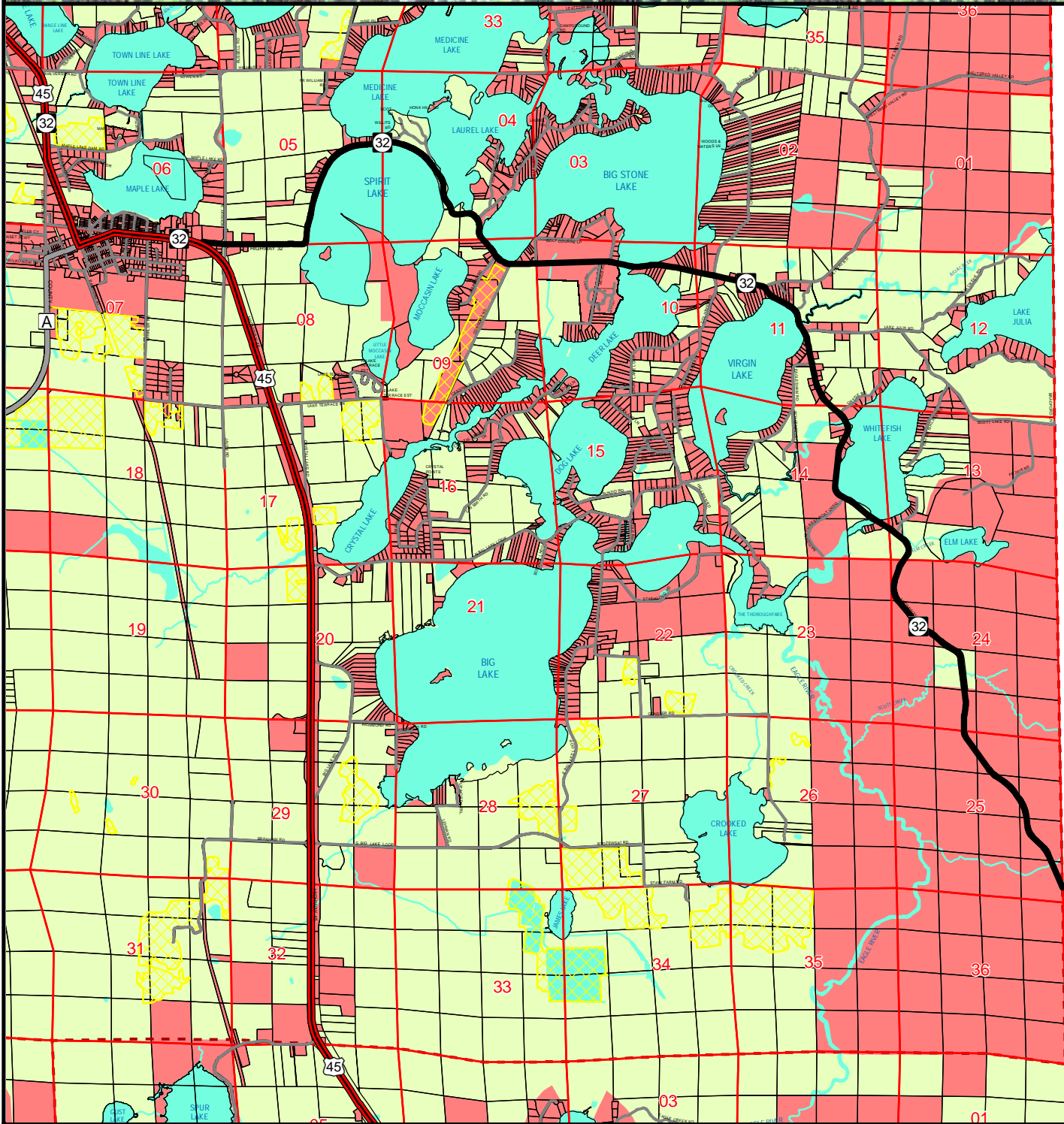
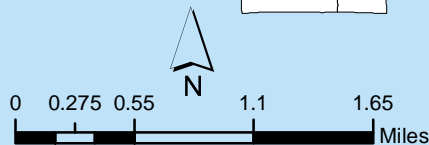
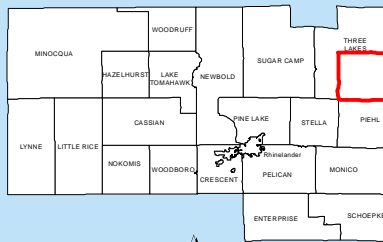


Farmland Preservation Map for T38N R11E Three Lakes (SE) - Oneida County, Wisconsin



Legend

- US Highways
- State Highways
- County Highways
- Local Roads
- Minor Civil Divisions
- PLSS Section
- Existing Agricultural Areas
- Parcels
- Water
- Farmland Preservation Areas
- Planned Out



Date: 7/14/2015

Source: WI DNR, NCWRPC

This map is neither a legally recorded map nor a survey and is not intended to be used as one. This drawing is a compilation of records, information and data used for reference purposes only. NCWRPC is not responsible for any inaccuracies herein contained.



Prepared By:
**North Central
 Wisconsin Regional
 Planning Commission**

210 McClellan St., Suite 210, Wausau, WI 54403
 715-849-5510 - staff@ncwrpc.org - www.ncwrpc.org