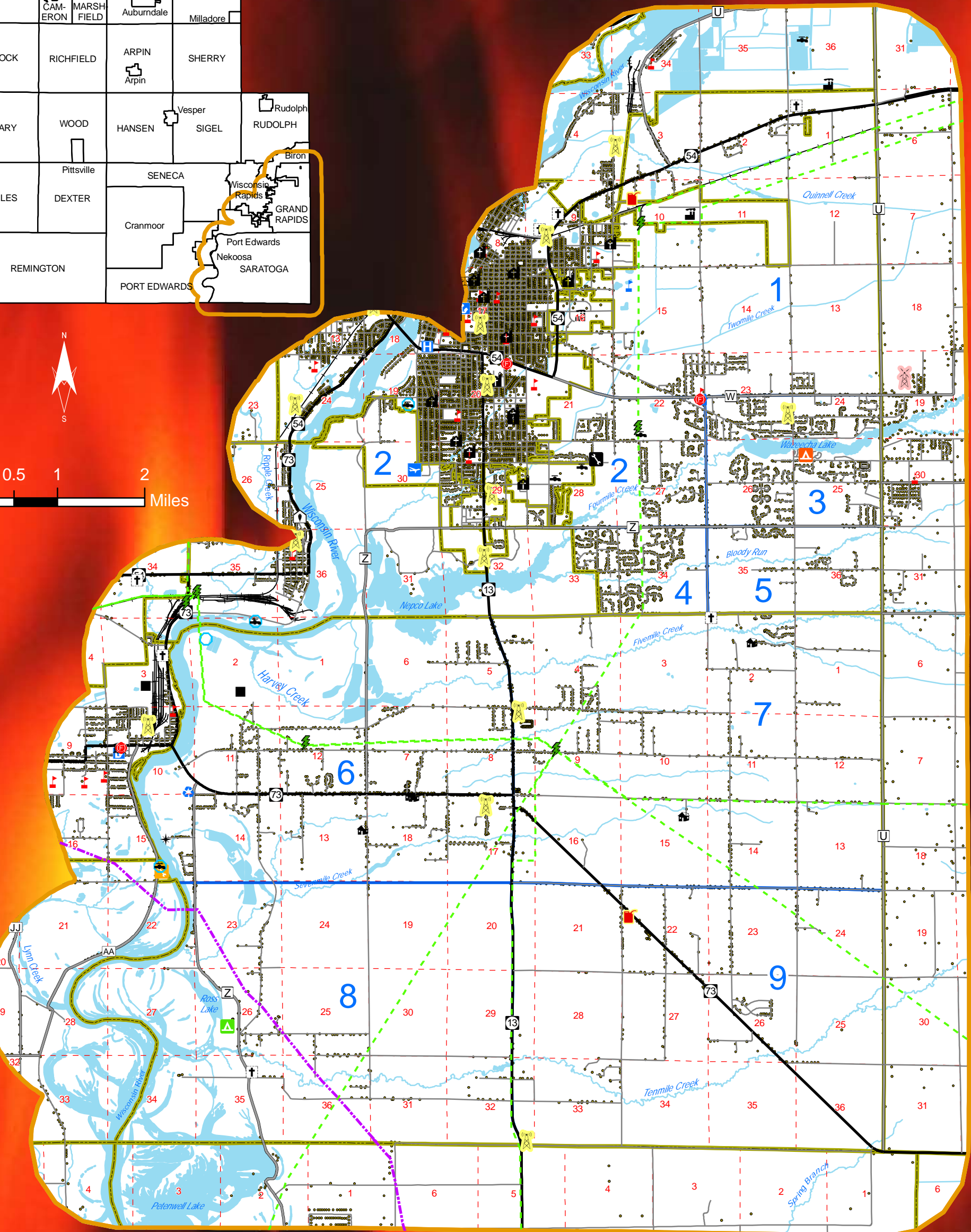
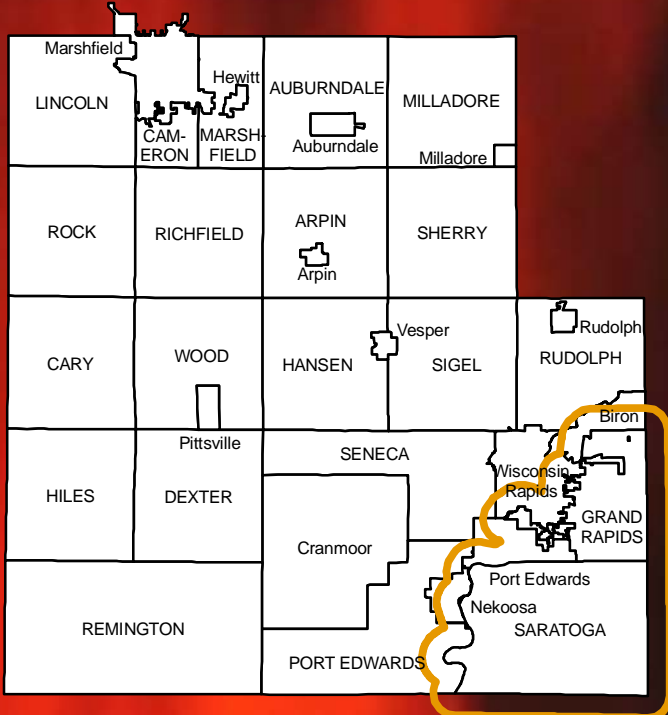


Town of Grand Rapids & Saratoga, Wood County

Map 6 Critical Facilities Map



Minor Civil Divisions	Communication Tower	Cemetery	Library
Section Lines	County	Church	Museum
Planning Unit Boundaries	Private	City Garage	Police Department
Study Area	Assisted Living / Group Homes	City Hall	School
State Highways	Public Water Supply	County Garage	Tech School
County Highways	Waste Water Treatment Plant	Court House	Town Garage
Local Roads	Substations	Fire Station	Town Hall
Railroad	Airport	Historic Places	Town Hall / Police Station
Water	Bulk Fuel	Hospital	Transfer Site
Building Structures	Business Park	Landfill	High Voltage Powerline
			Pipeline

Source: WI DNR, NCWRPC, Wood Co. ATC

This map is neither a legally recorded map nor a survey and is not intended to be used as one. This drawing is a compilation of records, information and data used for reference purposes only. NCWRPC is not responsible for any inaccuracies herein contained.



Prepared By:
**North Central
Wisconsin Regional
Planning Commission**

210 McClellan St., Suite 210, Wausau, WI 54403
715-849-5510 - staff@ncwrpc.org - www.ncwrpc.org