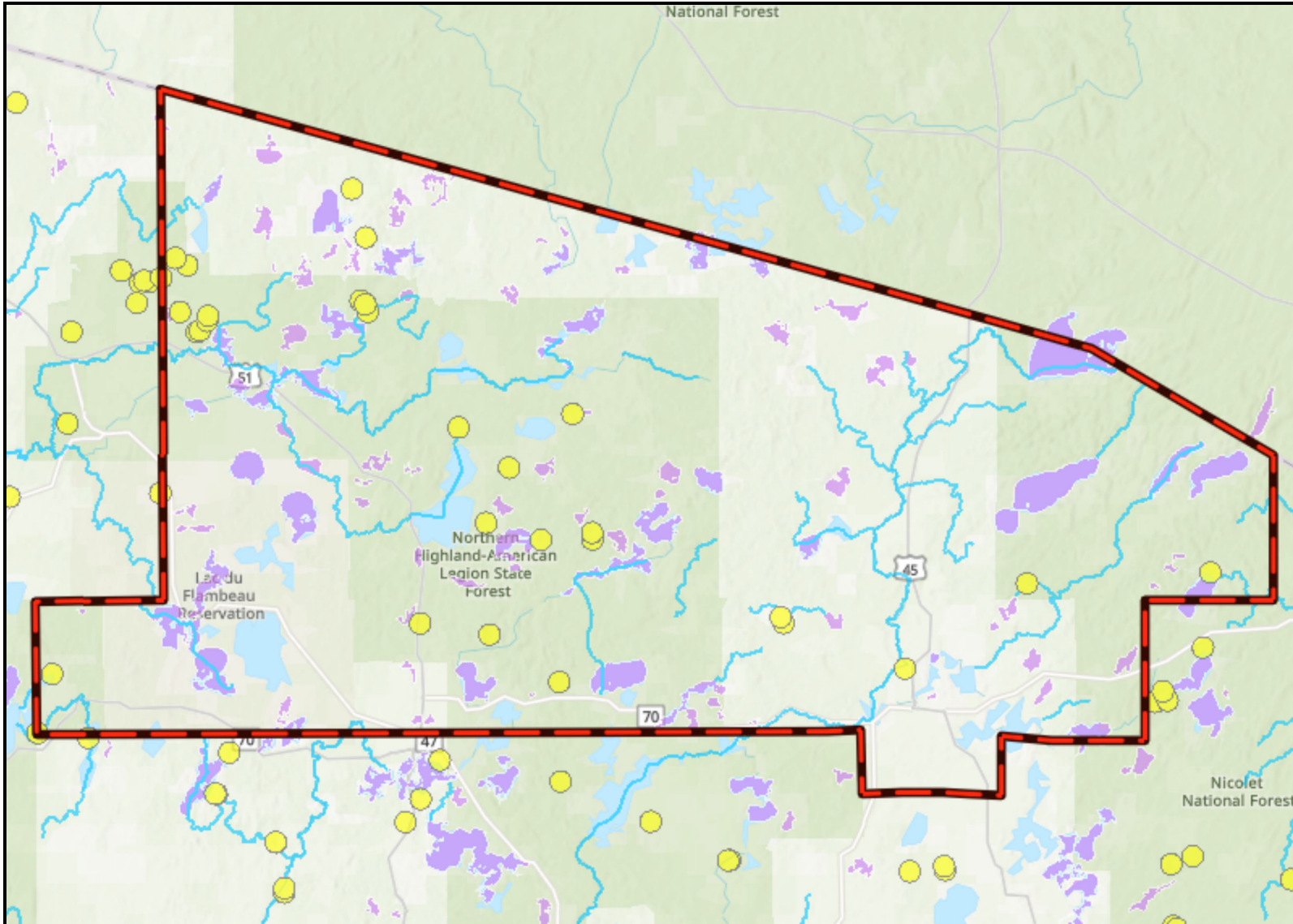




Vilas County: High-Quality Waters



Legend

- Protection - Healthy Watersheds, High-Quality Waters
- Healthy & Rare Wetlands
- High-Quality Streams
- High-Quality Lakes & Large Rivers

Notes

Map displays the WDNR identified High-Quality Waters that are current as of 2021. For the most up to date information, please reference the assessment results and mapping services on the website: <https://dnr.wisconsin.gov/topic/SurfaceWater/HQW.html>

Service layer credits:
Luke Beringer, Pamela Toshner, Aaron Marti



1:611,300



This map is a product generated by a DNR mapping application

This map is for informational purposes only and may not have been prepared for or be suitable for legal, engineering or surveying purposes. The user is solely responsible for verifying the accuracy of information before using for any purpose. By using this product for any purpose user agrees to be bound by all disclaimers found here: <https://dnr.wisconsin.gov/legal>

Date Printed: 08/15/2024





2021 High-Quality Waters: Lakes, Rivers, Streams

Vilas County - 123 High-Quality Waters identified in 2021

Data sorted by alphabetical county and alphabetical waterbody name

OFFICIAL NAME	LOCAL NAME	WBIC	PRIORITY	COUNTY NAME (STREAM MOUTH & LAKE LOCATION)	HUC6	HUC12 CODE (STREAM MOUTH & LAKE LOCATION)	UNIQUE & RARE RESOURCES (COUNT)	Attaining WQS (COUNT)	IBIs (COUNT)	HQW CRITERIA (COUNT)
			WATERSHEDS HUC6: • State: •• Both: •••							
Alder Lake		2329600	••	Vilas	Chippewa	070500020106		1	1	2
Allequash Lake		2332400	•••	Vilas	Chippewa	070500020105	2		3	2
Alma Lake		967900	••	Vilas	Wisconsin	070700010403		1	2	2
Anvil Lake		968800	•••	Vilas	Wisconsin	070700010102		2	3	2
Armour Lake		2953200	•••	Vilas	SC Lake Superior	040201010303		1	1	2
Arrowhead Lake	Little Star	1541500	•	Vilas	Wisconsin	070700010803	1		14	2
Averill Lake	Mud	2956700	•••	Vilas	SC Lake Superior	040201010303	1		3	2
Bass Lake		1604200		Vilas	Wisconsin	070700010206		1	1	2
Beaver Lake		2960600		Vilas	SC Lake Superior	040201010301		1	2	2
Benson Lake		2327100	•••	Vilas	Chippewa	070500020108	1		1	2
Big Arbor Vitae Lake		1545600	•••	Vilas	Wisconsin	070700010801	1		3	2
Big Lake		2334700	••	Vilas	Chippewa	070500020103	3		2	2
Big Lake		2963800	•••	Vilas	SC Lake Superior	040201020101		1	2	2
Big Muskellunge Lake		1835300	•••	Vilas	Chippewa	070500020105	1	1	2	3
Big Portage Lake		1629500	•••	Vilas	Wisconsin	070700010301		1	2	2
Big Saint Germain Lake		1591100	•••	Vilas	Wisconsin	070700010502	1		2	2
Big Sand Lake		1602600		Vilas	Wisconsin	070700010101		1	8	2
Birch Lake		2311100	••	Vilas	Chippewa	070500020302		1	1	2
Black Oak Lake		1630100	•••	Vilas	Wisconsin	070700010301	2	2	2	3
Boot Lake		1619100	••	Vilas	Wisconsin	070700010307	1		27	2
Brandy Lake	Cecilia, Branley	1541300	•	Vilas	Wisconsin	070700010803	1	2	4	3
Buckatabon Creek	W Br	1620800	•••	Vilas	Wisconsin	070700010308	2		3	2
Carlin Lake		2757900	•••	Vilas	SC Lake Superior	040201010303		1	1	2
Carpenter Lake		976100		Vilas	Wisconsin	070700010206		1	1	2
Circle Lily Lake		2326700	•••	Vilas	Chippewa	070500020108	1	1	1	3
Clear Lake		2329000	••	Vilas	Chippewa	070500020107	1		1	2
Cochran Lake		2963500		Vilas	SC Lake Superior	040201020102		1	2	2
Crab Lake		2953500	•	Vilas	SC Lake Superior	040201010303	2	1	2	3
Crawling Stone Lake		2322800		Vilas	Chippewa	070500020201	1	1		2
Crystal Lake		1842400	•••	Vilas	Chippewa	070500020105	1	2	1	3
Day Lake		1843500	••	Vilas	Chippewa	070500020106	1		1	2
Dead Pike Lake		2316600	•••	Vilas	Chippewa	070500020203	1		2	2
Deerskin Lake		1601300	•••	Vilas	Wisconsin	070700010103		1	1	2
Deerskin River		1600400		Vilas	Wisconsin	070700010206	4	3	6	3
Duck Lake		1599900		Vilas	Wisconsin	070700010206		1	3	2
Dunn Lake		2960000		Vilas	SC Lake Superior	040201010301	1		2	2
Escanaba Lake	Rock	2339900		Vilas	Chippewa	070500020101	1		1	2
Finger Lake		984700	•••	Vilas	Wisconsin	070700010308		1	2	2
Fishtrap Lake		2343200	•••	Vilas	Chippewa	070500020102		1	3	2
Flambeau Lake	Lac Du Flambeau	2320500	••	Vilas	Chippewa	070500020202	1	1		2
Forest Lake	Goose	2762200	•••	Vilas	SC Lake Superior	040201020101	1		4	2
Frank Lake	Bear	985900	•••	Vilas	Wisconsin	070700010502	1		1	2
Gunlock Lake		1539700	•••	Vilas	Wisconsin	070700010806		1	1	2
Harris Lake		2958500		Vilas	SC Lake Superior	040201010302		1	1	2
Haymeadow Creek		1628800	•••	Vilas	Wisconsin	070700010304	2		1	2
Hiawatha Lake	Little Long	2328400		Vilas	Chippewa	070500020107		1	1	2
High Lake		2344000	•••	Vilas	Chippewa	070500020102		1	2	2
Horsehead Lake		2953100	•••	Vilas	SC Lake Superior	040201010303		1	1	2
Ike Walton Lake		2321800	•••	Vilas	Chippewa	070500020203		1	1	2

Imogene Lake		586800	•••	Vilas	Wisconsin	070700010102		1	1	2
Irving Lake		2340900		Vilas	Chippewa	070500020101	1		1	2
Island Lake		2334400	••	Vilas	Chippewa	070500020104	2		1	2
Johnson Lake		1541100	•	Vilas	Wisconsin	070700010803	1	1		2
Kentuck Creek		716400	••	Vilas	NW Lake Michigan	040301060301	1		1	2
Kentuck Lake		716800	••	Vilas	NW Lake Michigan	040301060301	1		4	2
Lac Vieux Desert		1631900		Vilas	Wisconsin	070700010302	2	2	2	3
Lake Laura		995200	•••	Vilas	Wisconsin	070700010502	1		1	2
Little Crawling Stone Lake		2324000		Vilas	Chippewa	070500020201	1	1		2
Little Deerskin River		1600600	•••	Vilas	Wisconsin	070700010104	2		1	2
Little Portage Lake		1629200	•••	Vilas	Wisconsin	070700010301	1	1		2
Little Saint Germain Lake		1596300		Vilas	Wisconsin	070700010403	1	2	1	3
Little Spider Lake	Gaffrey	1540400	•	Vilas	Wisconsin	070700010803		1	1	2
Little Star Lake		1593200	•••	Vilas	Wisconsin	070700010502		1	2	2
Little Star Lake		2334300	••	Vilas	Chippewa	070500020106	1		1	2
Little Trout Lake		2321600	•••	Vilas	Chippewa	070500020203	1		1	2
Long Interlaken Lake	Long L	2322300	••	Vilas	Chippewa	070500020202	1		1	2
Long Lake		1602300		Vilas	Wisconsin	070700010101	1	1	3	3
Lower Gresham Lake		2330300	••	Vilas	Chippewa	070500020106		1	1	2
Lower Sugarbush Lake		2317600	•••	Vilas	Chippewa	070500020203	1	1		2
Mamie Lake	Lake Mamie	2964100	•••	Vilas	SC Lake Superior	040201020101		1	3	2
Manitowish Lake		2329400	••	Vilas	Chippewa	070500020106	1	1	1	3
Manitowish River	Manitou, Wide	2324400	•••	Vilas	Chippewa	070500020307	5		3	2
Mann Lake		2332000	•••	Vilas	Chippewa	070500020105		1	1	2
McCullough Lake		2960400		Vilas	SC Lake Superior	040201010301	1		2	2
McDonald Lake		1003700		Vilas	Wisconsin	070700010403		1	1	2
Middle Gresham Lake		2330700	••	Vilas	Chippewa	070500020106		1	1	2
Middle Sugarbush Lake		2317700	•••	Vilas	Chippewa	070500020203	2	1		2
Military Creek		1623900	•	Vilas	Wisconsin	070700010305	3		1	2
Moon Lake		1005800		Vilas	Wisconsin	070700010403		1	2	2
Morton Lake		2960300		Vilas	SC Lake Superior	040201010301	1	1	2	3
Muskellunge Creek		1596400		Vilas	Wisconsin	070700010403	1	1		2
Nixon Lake		2341200	•••	Vilas	Chippewa	070500020102	2		1	2
North Creek		2333200	•••	Vilas	Chippewa	070500020105	2		1	2
North Turtle Lake		2310400	••	Vilas	Chippewa	070500020302	1		1	2
Oxbow Lake		2954800	•••	Vilas	SC Lake Superior	040201010303	1		3	2
Papoose Creek		2327800		Vilas	Chippewa	070500020107	4	1	1	3
Papoose Lake		2328700		Vilas	Chippewa	070500020107	1	1	1	3
Pickerel Creek		1619200	••	Vilas	Wisconsin	070700010307	1		1	2
Pioneer Creek		1623000	•••	Vilas	Wisconsin	070700010304	3		1	2
Plum Creek		1592100	•••	Vilas	Wisconsin	070700010502	4		1	2
Plum Lake		1592400	•••	Vilas	Wisconsin	070700010502	4	1	2	3
Pokegama Lake		2320800	••	Vilas	Chippewa	070500020202	1	1		2
Portage Creek		1628900	•••	Vilas	Wisconsin	070700010301	1		1	2
Presque Isle Lake		2956500	•••	Vilas	SC Lake Superior	040201010303	1	1	3	3
Prong Lake		1013200	•••	Vilas	Wisconsin	070700010801	1		1	2
Razorback Lake		1013800	•••	Vilas	Wisconsin	070700010502	1		1	2
Rest Lake		2327500		Vilas	Chippewa	070500020107	3	1	2	3
Rice Creek	Crooked	2334500	••	Vilas	Chippewa	070500020104	2		1	2
Round Lake		2334900	••	Vilas	Chippewa	070500020103	1		2	2
Silver Lake		1599800		Vilas	Wisconsin	070700010206		2	1	2
Siphon Creek		2342200	•••	Vilas	Chippewa	070500020102	3		1	2
Smoky Lake	Long Lake	1018300		Vilas	Wisconsin	070700010101	1	1	2	3
Sparkling Lake	Silver	1881900	•••	Vilas	Chippewa	070500020105	1		1	2
Spectacle Lake		717400	••	Vilas	NW Lake Michigan	040301060301		1	1	2
Spider Lake		2329300		Vilas	Chippewa	070500020107	1		1	2
Spring Meadow Creek		1604300		Vilas	Wisconsin	070700010206	2		2	2

Star Lake		1593100	•••	Vilas	Wisconsin	070700010502	3		1	2
Stella Creek		1593900	•••	Vilas	Wisconsin	070700010501	3		4	2
Stormy Lake		1020300	•	Vilas	Wisconsin	070700010306	2		1	2
Sturgeon Lake	Deer	2327200	•••	Vilas	Chippewa	070500020108	1		2	2
Tamarack Creek	Emil	1624800	•••	Vilas	Wisconsin	070700010304	4		4	2
Towanda Lake	Bass	1022900	•	Vilas	Wisconsin	070700010803		1	1	2
Trout River		2329500		Vilas	Chippewa	070500020107	3		2	2
Twin Lakes (North)	North Twin Lake	1623800	•	Vilas	Wisconsin	070700010305	2		2	2
Twin Lakes (South)	South Twin Lake	1623700	•	Vilas	Wisconsin	070700010305	2		10	2
Upper Buckatabon Lake		1621800	•	Vilas	Wisconsin	070700010306	1		3	2
Upper Gresham Lake		2330800	••	Vilas	Chippewa	070500020106		1	5	2
Van Vliet Lake		2956800	•••	Vilas	SC Lake Superior	040201010303	1	1	2	3
Vance Lake	Dam,Dan	2327300	•••	Vilas	Chippewa	070500020108	1		1	2
Wabasso Lake	Clear, Bass	2045000	••	Vilas	Chippewa	070500030203	1		1	2
West Plum Lake		1592500	•••	Vilas	Wisconsin	070700010502	1		2	2
Wild Rice Lake	Half Way	2329800	••	Vilas	Chippewa	070500020106	1		2	2
Wildcat Lake		2336800	••	Vilas	Chippewa	070500020103		1	3	2



2021 High-Quality Waters: Healthy Wetlands

Vilas County - 14 Healthy Wetlands identified in 2021

Data sorted by alphabetical county and increasing Healthy Wetland ID

WETLAND ID	SITE NAME	SITE ID	PRIORITY WATERSHEDS		COUNTY NAME	HUC6	HUC12 CODE	DISTURBANCE RANK	PLANT COMMUNITY CONDITION	LAT	LONG
			HUC6: •	State: ••							
Healthy_433	NLF-344	NL359	•••	Both: •••	Vilas	Wisconsin	070700010308	2	2	45.938886	-89.2626
Healthy_440	NLF-346	NL361	•••		Vilas	Wisconsin	070700010307	1	1	45.967487	-89.371635
Healthy_441	NLF-345	NL360	•••		Vilas	Wisconsin	070700010307	1	1	45.971059	-89.374254
Healthy_443	Kentuck Lake SNA	NL264	••		Vilas	NW Lake Michigan	040301060301	1	1	45.999069	-88.988239
Healthy_464	Nixon Lake SNA	NL478	•••		Vilas	Chippewa	070500020102	2	2	46.09814	-89.561168
Healthy_467	NLF-412	NL427	•••		Vilas	Chippewa	070500020108	1	1	46.149139	-89.898811
Healthy_468	NLF-413	NL428	•••		Vilas	Chippewa	070500020108	1	1	46.150198	-89.896047
Healthy_469	Toy Lake Swamp	NL469			Vilas	Chippewa	070500020107	2	2	46.156063	-89.889507
Healthy_470	Toy Lake Swamp	NL468			Vilas	Chippewa	070500020107	1	1	46.159299	-89.888749
Healthy_471	NLF-434	NL449	•••		Vilas	Chippewa	070500020108	2	2	46.161707	-89.913913
Healthy_472	Rice Creek SNA	NL480	••		Vilas	Chippewa	070500020103	1	1	46.1671	-89.74797
Healthy_473	Rice Creek SNA	NL479	••		Vilas	Chippewa	070500020103	1	1	46.168765	-89.751549
Healthy_485	NLF-355	NL370	•••		Vilas	Chippewa	070500020108	2	2	46.190749	-89.9074
Healthy_487	NLF-356	NL371	•••		Vilas	Chippewa	070500020108	1	1	46.195326	-89.918234



2021 High-Quality Waters: Rare & Unique Wetlands

Vilas County - 16 Rare & Unique Wetlands identified in 2021

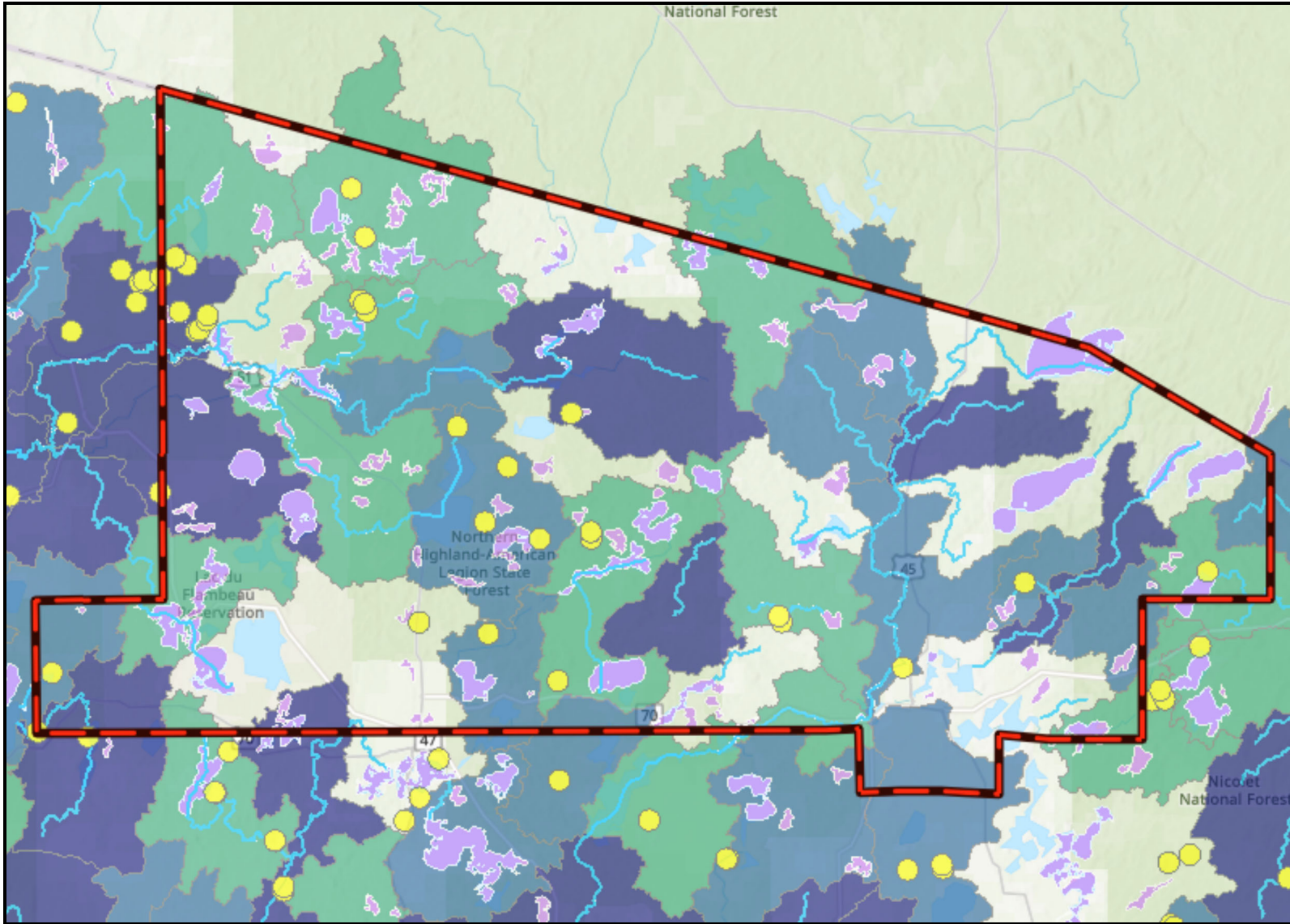
Data sorted by alphabetical county and increasing Rare & Unique Wetland ID

WETLAND ID	WETLAND TYPE	SITE ID	PRIORITY WATERSHEDS		COUNTY NAME	HUC6	HUC12 CODE	SRANK	GRANK	LAT	LONG
			HUC6: •	State: ••							
Rare_322	Wild Rice Marsh	CPHER057WI	•••		Vilas	Chippewa	070500030202	S3	G3G4	45.898551	-90.041831
Rare_324	Poor Fen	CPHER069WI	•••		Vilas	Wisconsin	070700010502	S3	G3G4	45.930565	-89.573211
Rare_326	Poor Fen	CPHER069WI	••		Vilas	Chippewa	070500030203	S3	G3G4	45.935439	-90.028791
Rare_328	Poor Fen	CPHER069WI	•••		Vilas	Wisconsin	070700010801	S3	G3G4	45.960142	-89.635785
Rare_329	Poor Fen	CPHER069WI	•		Vilas	Wisconsin	070700010803	S3	G3G4	45.967155	-89.698159

Rare_330	Poor Fen	CPHER069WI	•••	Vilas	Wisconsin	070700010103 S3	G3G4	45.992129	-89.153001
Rare_334	Poor Fen	CPHER069WI	•••	Vilas	Chippewa	070500020105 S3	G3G4	46.019458	-89.589614
Rare_335	Wild Rice Marsh	CPHER057WI	•••	Vilas	Wisconsin	070700010502 S3	G3G4	46.019807	-89.543405
Rare_336	Boreal Rich Fen	CPHER065WI	•••	Vilas	Wisconsin	070700010502 S2	G4G5	46.023948	-89.543562
Rare_337	Wild Rice Marsh	CPHER057WI	•••	Vilas	Chippewa	070500020105 S3	G3G4	46.030024	-89.638851
Rare_340	Poor Fen	CPHER069WI	•••	Vilas	Chippewa	070500020105 S3	G3G4	46.064463	-89.618197
Rare_342	Poor Fen	CPHER069WI	•••	Vilas	Chippewa	070500020105 S3	G3G4	46.089636	-89.663735
Rare_346	Wild Rice Marsh	CPHER057WI	••	Vilas	Chippewa	070500020103 S3	G3G4	46.161912	-89.745253
Rare_347	Boreal Rich Fen	CPHER065WI	••	Vilas	Chippewa	070500020103 S2	G4G5	46.166423	-89.747325
Rare_350	Poor Fen	CPHER069WI	•••	Vilas	SC Lake Superior	040201010303 S3	G3G4	46.208227	-89.747046
Rare_352	Boreal Rich Fen	CPHER065WI	•	Vilas	SC Lake Superior	040201010303 S2	G4G5	46.238466	-89.759394



Vilas County: Watershed Protection Priorities - Statewide Top 30%



Legend

- Protection - Healthy Watersheds, High-Quality Waters
- Healthy & Rare Wetlands
- High-Quality Streams
- High-Quality Lakes & Large Rivers
- Watershed Health Score
 - Top 10%
 - Top 10 - 20%
 - Top 20 - 30%

Notes

Map displays the WDNR Identified Statewide Top 30% Protection Priority Watersheds (HUC12) and the identified High-Quality Waters. For the most up to date information, please reference the assessment results and mapping services on the website: <https://dnr.wisconsin.gov/topic/SurfaceWater/HQW.html>

Service layer credits:
Luke Beringer, Pamela Toshner, Aaron Marti



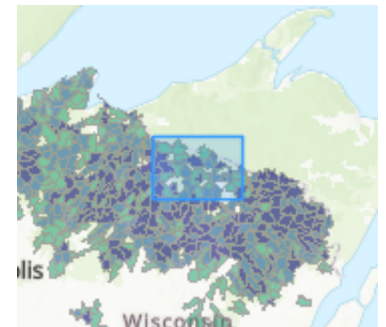
1:611,300



This map is a product generated by a DNR mapping application

This map is for informational purposes only and may not have been prepared for or be suitable for legal, engineering or surveying purposes. The user is solely responsible for verifying the accuracy of information before using for any purpose. By using this product for any purpose user agrees to be bound by all disclaimers found here: <https://dnr.wisconsin.gov/legal>

Date Printed: 08/15/2024



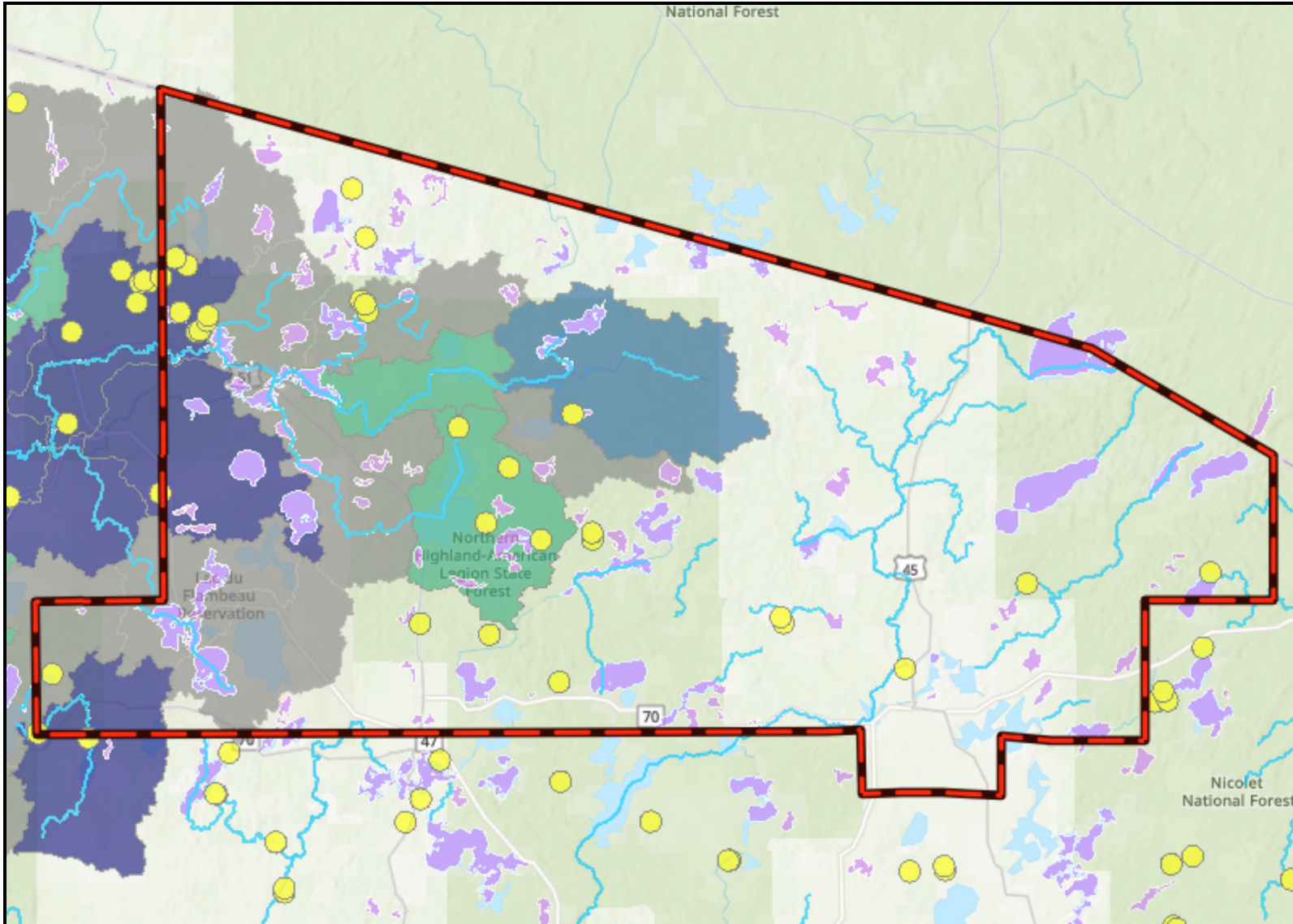


2021 Healthy Watersheds Scores & Ranks: Vilas County







HUC12 References			Statewide Score & Rank			
Watershed_ID	HUC12_NAME	HUC6_NAME	WATERSHED HEALTH SCORE	STATEWIDE RANK	STATEWIDE TOP 30% PRIORITY	HUC6 TOP 30% PRIORITY
040201010303	South Branch Presque Isle River	Southcentral Lake Superior	0.68205	360	Y	Y
040201020101	Cisco Lake-Cisco Branch Ontonagon River	Southcentral Lake Superior	0.68040	367	Y	Y
040301060301	Brule Creek	Northwestern Lake Michigan	0.67497	394	Y	
040301060302	Elvoy Creek	Northwestern Lake Michigan	0.69032	331	Y	
070500020101	White Sand Creek	Chippewa	0.62865	556		
070500020102	Headwaters Manitowish River	Chippewa	0.72566	131	Y	Y
070500020103	Rice Creek	Chippewa	0.68021	368	Y	
070500020104	Island Lake-Manitowish River	Chippewa	0.70708	231	Y	Y
070500020105	Trout Lake	Chippewa	0.69798	282	Y	Y
070500020106	Trout River	Chippewa	0.67270	402	Y	
070500020107	Papoose Creek-Manitowish River	Chippewa	0.63261	539		
070500020108	Manitowish River	Chippewa	0.77641	2	Y	Y
070500020201	Fence Lake	Chippewa	0.62714	563		
070500020202	Flambeau Lake-Bear River	Chippewa	0.67553	392	Y	
070500020203	Little Bear Creek	Chippewa	0.75814	15	Y	Y
070500020302	Headwaters Turtle River	Chippewa	0.68159	362	Y	
070500030202	Squaw Creek	Chippewa	0.74645	40	Y	Y
070500030203	Rice Creek-South Fork Lambeau River	Chippewa	0.69225	321	Y	
070700010101	Thoroughfare Creek-Deerskin River	Wisconsin	0.62184	582		
070700010102	Blackjack Creek	Wisconsin	0.71159	205	Y	Y
070700010103	Little Deerskin River	Wisconsin	0.69825	279	Y	Y
070700010104	Deerskin River	Wisconsin	0.73147	103	Y	Y
070700010204	Ninemile Creek	Wisconsin	0.64160	512	Y	Y
070700010206	Eagle Lake-Eagle River	Wisconsin	0.61428	613		
070700010301	Portage Creek	Wisconsin	0.69138	327	Y	Y
070700010303	Tamarack Creek	Wisconsin	0.69326	312	Y	Y

Watershed_ID	HUC12_NAME	HUC6_NAME	WATERSHED HEALTH SCORE	STATEWIDE RANK	STATEWIDE TOP 30% PRIORITY	HUC6 TOP 30% PRIORITY
070700010304	Muskrat Creek-Wisconsin River	Wisconsin	0.75078	30	Y	Y
070700010305	Pioneer Creek	Wisconsin	0.63792	527		Y
070700010306	Buckatabon Creek	Wisconsin	0.63033	549		Y
070700010307	Rice Creek	Wisconsin	0.68713	348	Y	Y
070700010308	Sucker Creek-Wisconsin River	Wisconsin	0.70023	262	Y	Y
070700010401	Mud Creek	Wisconsin	0.69937	272	Y	Y
070700010402	Sugar Camp Creek	Wisconsin	0.71454	191	Y	Y
070700010403	Little Saint Germain Creek	Wisconsin	0.58407	705		
070700010404	Rainbow Flowage-Wisconsin River	Wisconsin	0.65439	468	Y	Y
070700010501	Lost Creek	Wisconsin	0.72030	159	Y	Y
070700010502	Big Saint Germain Lake-Saint Germain River	Wisconsin	0.68094	363	Y	Y
070700010503	Gilmore Creek	Wisconsin	0.68979	336	Y	Y
070700010801	Big Arbor Vitae Lake	Wisconsin	0.68988	335	Y	Y
070700010803	Mishonagon Creek-Tomahawk River	Wisconsin	0.62287	579		Y
070700010804	Squirrel River	Wisconsin	0.67790	381	Y	Y
070700010806	Shishebogama Lake-Tomahawk River	Wisconsin	0.73189	99	Y	Y

Vilas County: Watershed Protection Priorities - Chippewa River Basin (HUC6) Top 30%



Legend

- Protection - Healthy Watersheds, High-Quality Waters
- Healthy & Rare Wetlands 
- High-Quality Streams 
- High-Quality Lakes & Large Rivers 
- Watershed Health Index
 -  Highest
 -  High
- HUC12 Boundaries 

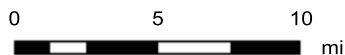
Notes

Map displays the WDNR Identified Chippewa River Basin (HUC6) Top 30% Protection Priority Watersheds (HUC12) and the identified High-Quality Waters. For the most up to date information, please reference the assessment results and mapping services on the website: <https://dnr.wisconsin.gov/topic/SurfaceWater/HQW.html>

Service layer credits:
Luke Beringer, Pamela Toshner, Aaron Marti



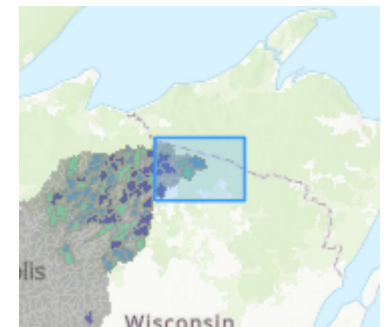
1:611,300



This map is a product generated by a DNR mapping application

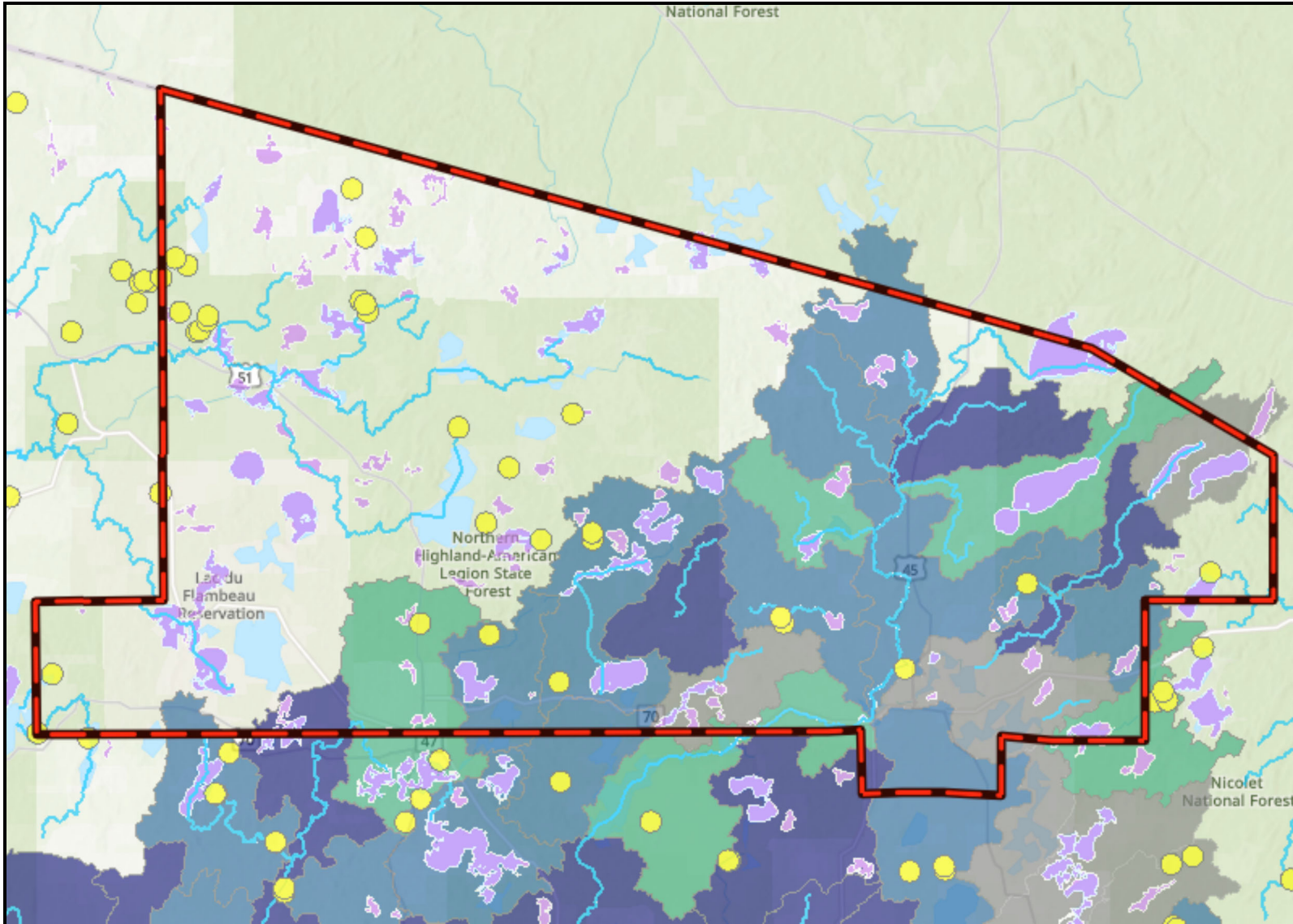
This map is for informational purposes only and may not have been prepared for or be suitable for legal, engineering or surveying purposes. The user is solely responsible for verifying the accuracy of information before using for any purpose. By using this product for any purpose user agrees to be bound by all disclaimers found here: <https://dnr.wisconsin.gov/legal>

Date Printed: 08/15/2024





Vilas County: Watershed Protection Priorities - Wisconsin River Basin (HUC6) Top 30%



Legend

- Protection - Healthy Watersheds, High-Quality Waters
- Healthy & Rare Wetlands
- High-Quality Streams
- High-Quality Lakes & Large Rivers
- Watershed Health Index
 - Highest
 - High
- HUC12 Boundaries

Notes

Map displays the WDNR Identified Wisconsin River Basin (HUC6) Top 30% Protection Priority Watersheds (HUC12) and the identified High-Quality Waters. For the most up to date information, please reference the assessment results and mapping services on the website: <https://dnr.wisconsin.gov/topic/SurfaceWater/HQW.html>

Service layer credits:
Luke Beringer, Pamela Toshner, Aaron Marti



1:611,300



This map is a product generated by a DNR mapping application

This map is for informational purposes only and may not have been prepared for or be suitable for legal, engineering or surveying purposes. The user is solely responsible for verifying the accuracy of information before using for any purpose. By using this product for any purpose user agrees to be bound by all disclaimers found here: <https://dnr.wisconsin.gov/legal>

Date Printed: 08/15/2024

