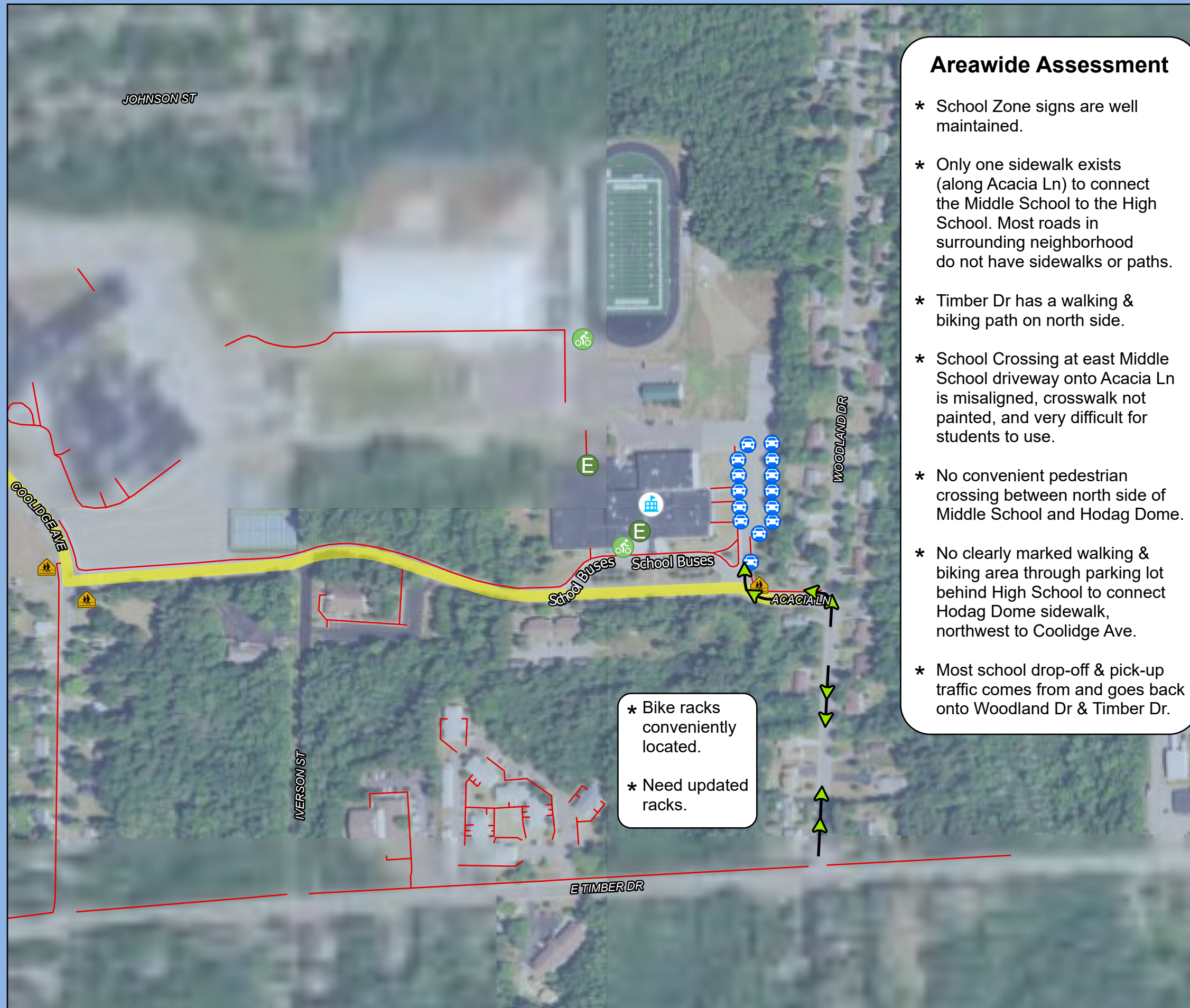


Site Assessment

James Williams Middle School

Rhineland Safe Routes To School



- ### Areawide Assessment
- * School Zone signs are well maintained.
 - * Only one sidewalk exists (along Acacia Ln) to connect the Middle School to the High School. Most roads in surrounding neighborhood do not have sidewalks or paths.
 - * Timber Dr has a walking & biking path on north side.
 - * School Crossing at east Middle School driveway onto Acacia Ln is misaligned, crosswalk not painted, and very difficult for students to use.
 - * No convenient pedestrian crossing between north side of Middle School and Hodag Dome.
 - * No clearly marked walking & biking area through parking lot behind High School to connect Hodag Dome sidewalk, northwest to Coolidge Ave.
 - * Most school drop-off & pick-up traffic comes from and goes back onto Woodland Dr & Timber Dr.

Legend

- James Williams Middle School
- School Entrance
- Bike Rack
- Parked Family Vehicle
- School Crossing
- Stop Sign
- No Sidewalk Ramp
- Sidewalks
- 15 MPH School Speed Limit
- Walking/Biking Direction



Source: WI DNR, WisDOT, NCWRPC, Oneida County
 This map is neither a legally recorded map nor a survey and is not intended to be used as one. This drawing is a compilation of records, information and data used for reference purposes only. NCWRPC is not responsible for any inaccuracies herein contained.

Prepared By:
North Central Wisconsin Regional Planning Commission

210 McClellan St., Suite 210, Wausau, WI 54403
 715-849-5510 - staff@ncwrpc.org - www.ncwrpc.org