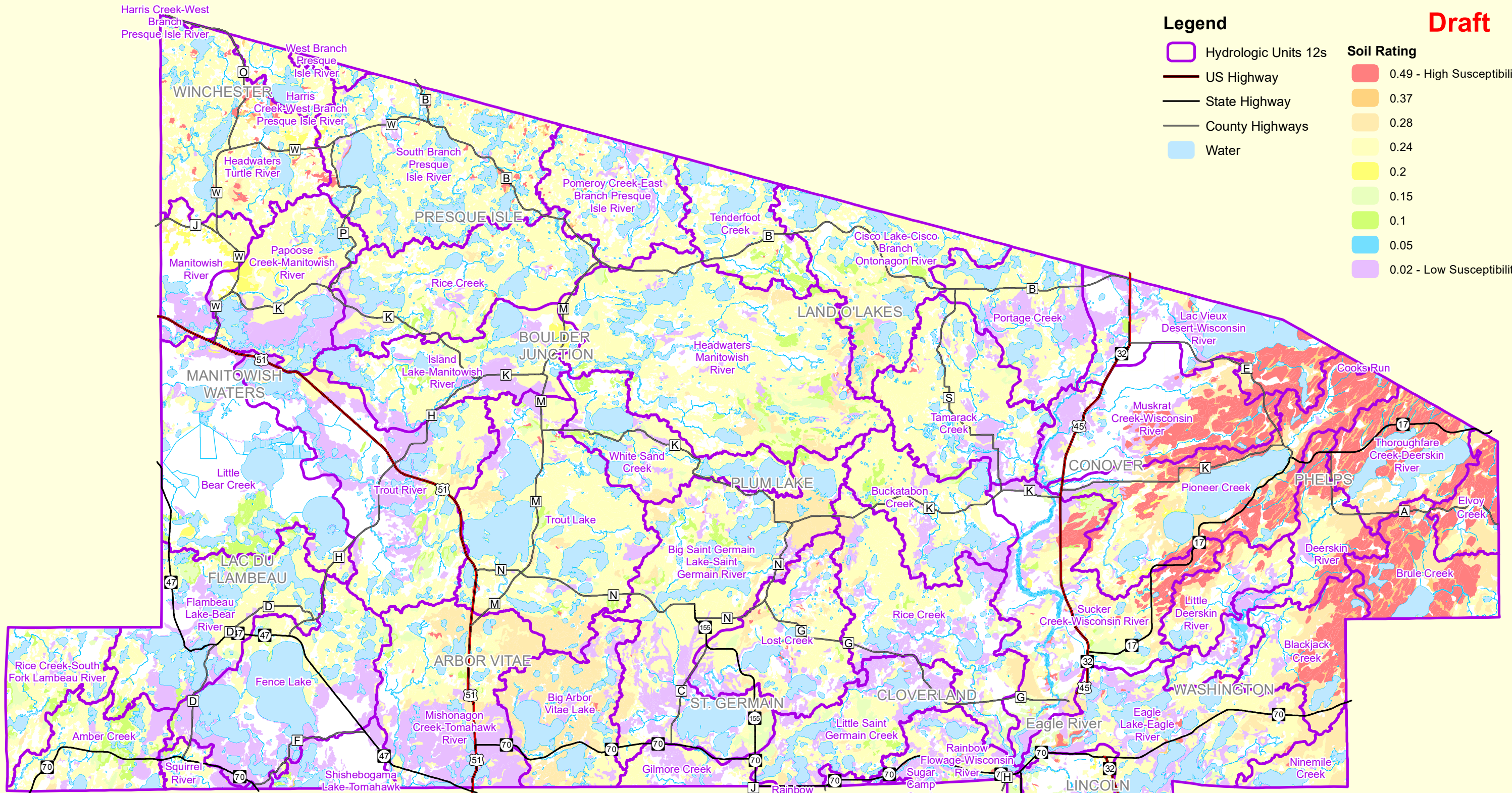


Draft



Legend

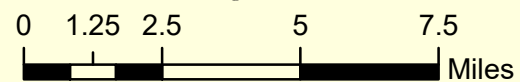
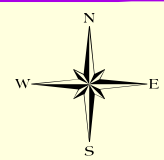
- Hydrologic Units 12s
- US Highway
- State Highway
- County Highways
- Water

Soil Rating

- 0.49 - High Susceptibility
- 0.37
- 0.28
- 0.24
- 0.2
- 0.15
- 0.1
- 0.05
- 0.02 - Low Susceptibility

Source: WI DNR, NRCS NCWRPC, Vilas County Mapping Dept

This map is neither a legally recorded map nor a survey and is not intended to be used as one. This drawing is a compilation of records, information and data used for reference purposes only. NCWRPC is not responsible for any inaccuracies herein contained.



Prepared By:
North Central
Wisconsin Regional
Planning Commission

210 McClellan St., Suite 210, Wausau, WI 54403
715-849-5510 - staff@ncwrpc.org - www.ncwrpc.org