

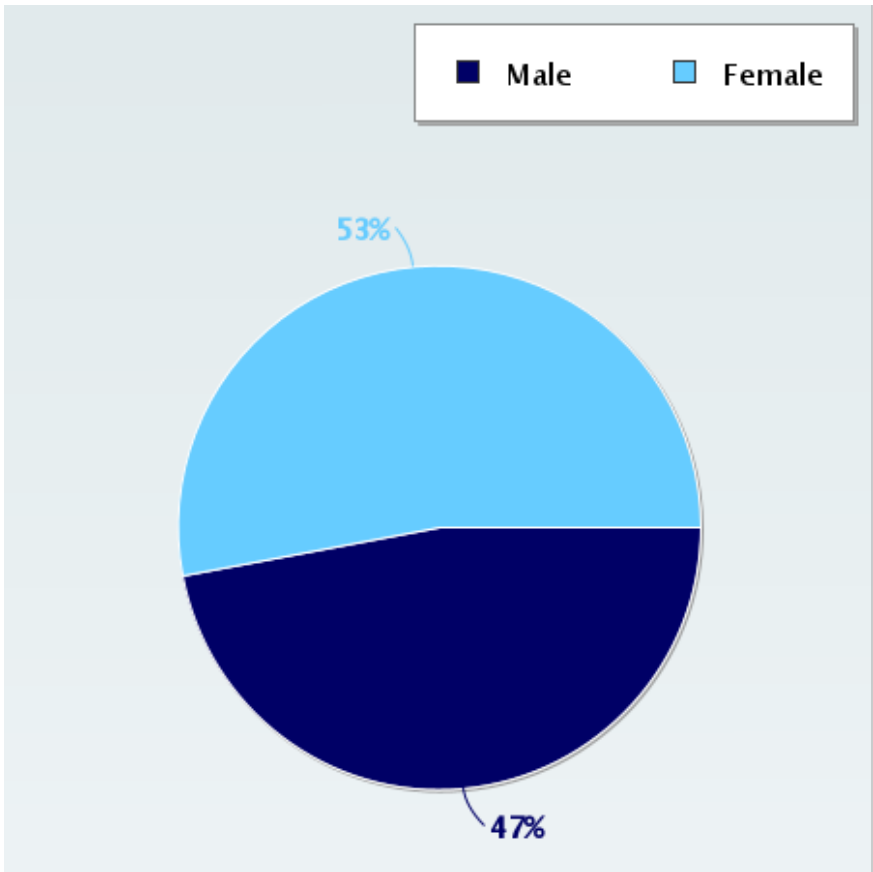
Parent Survey Report: One School in One Data Collection Period

School Name: Pelican Elementary School
School Group: Rhinelander
School Enrollment: 282
% Range of Students Involved in SRTS: Not Applicable
Number of Questionnaires Distributed: 116

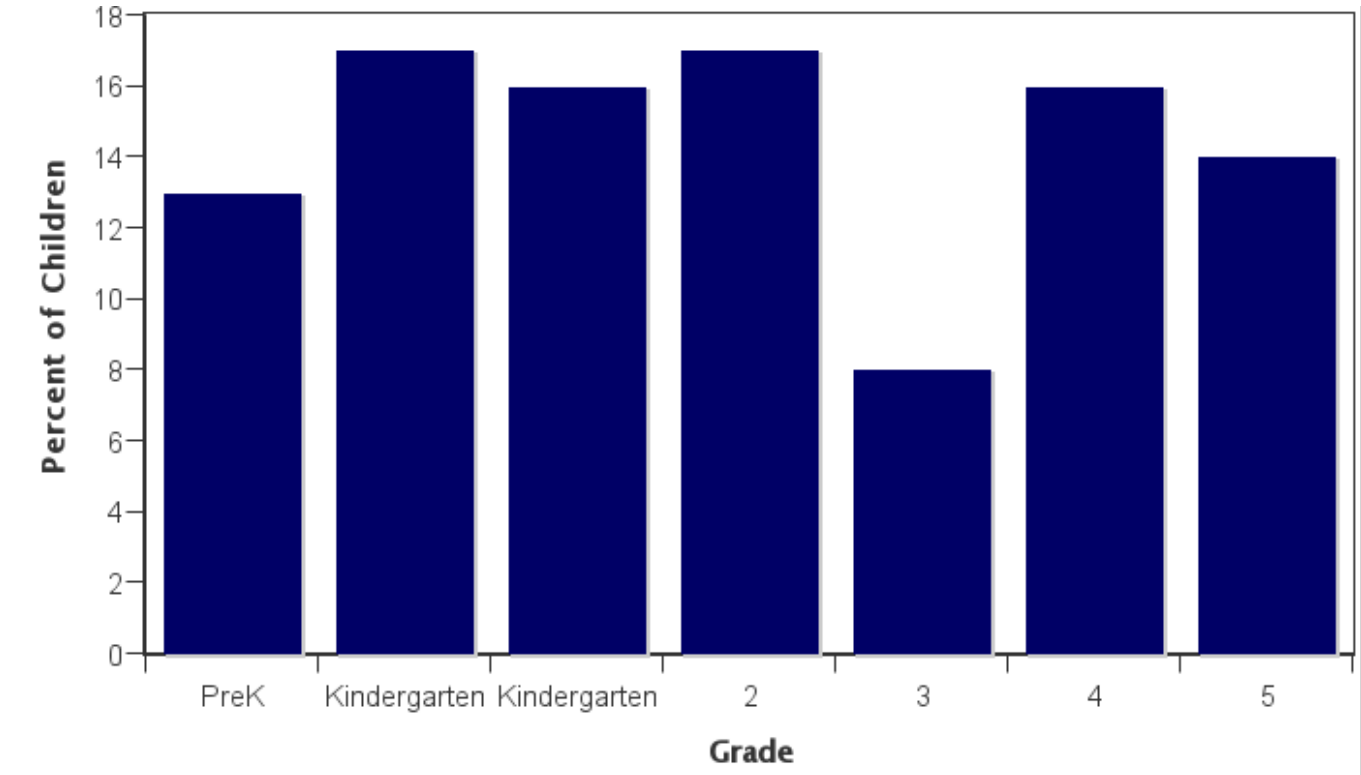
Set ID: 20205
Month and Year Collected: October 2022
Date Report Generated: 07/05/2023
Tags:
Number of Questionnaires Analyzed for Report: 116

This report contains information from parents about their children's trip to and from school. The report also reflects parents' perceptions regarding whether walking and bicycling to school is appropriate for their child. The data used in this report were collected using the Survey about Walking and Biking to School for Parents form from the National Center for Safe Routes to School.

Sex of children for parents that provided information



Grade levels of children represented in survey



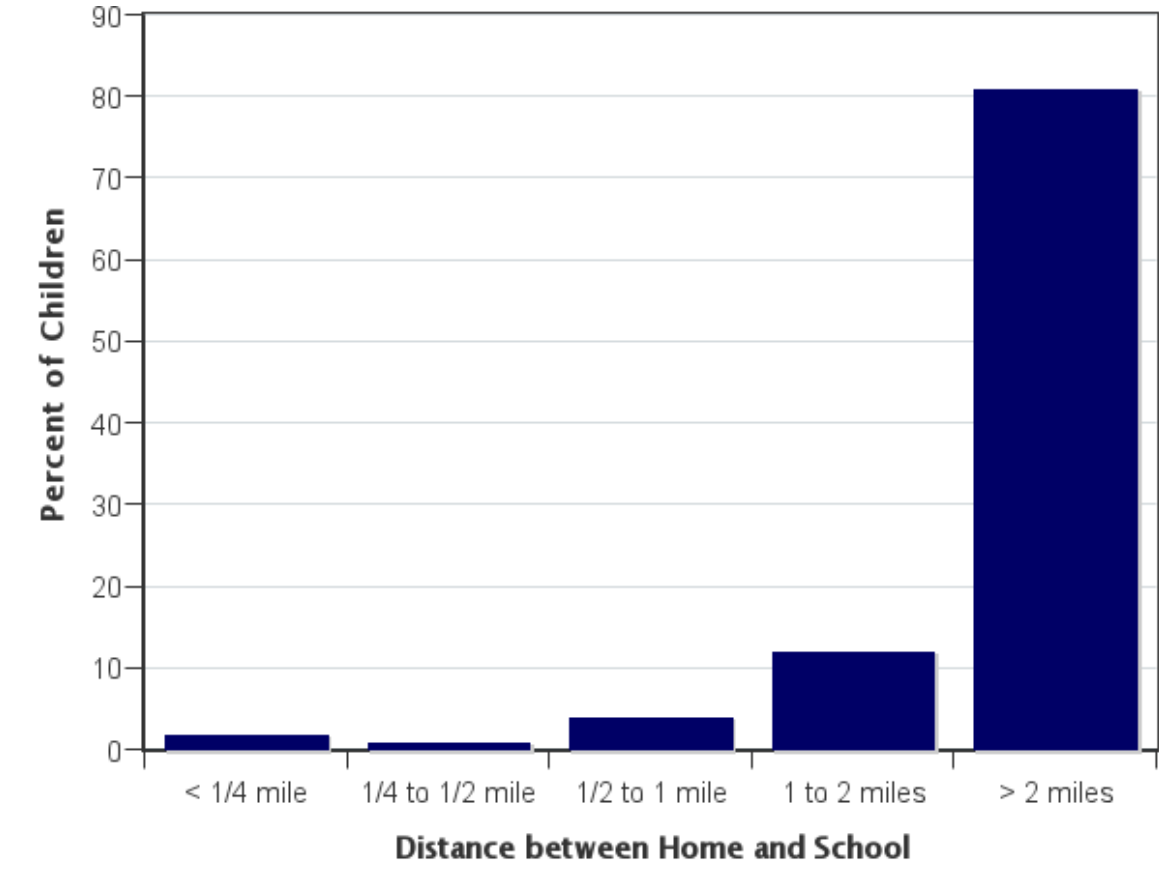
Grade levels of children represented in survey

Grade in School	Responses per grade	
	Number	Percent
PreK	15	13%
Kindergarten	20	17%
1	18	16%
2	20	17%
3	9	8%
4	18	16%
5	16	14%

No response: 0

Percentages may not total 100% due to rounding.

Parent estimate of distance from child's home to school



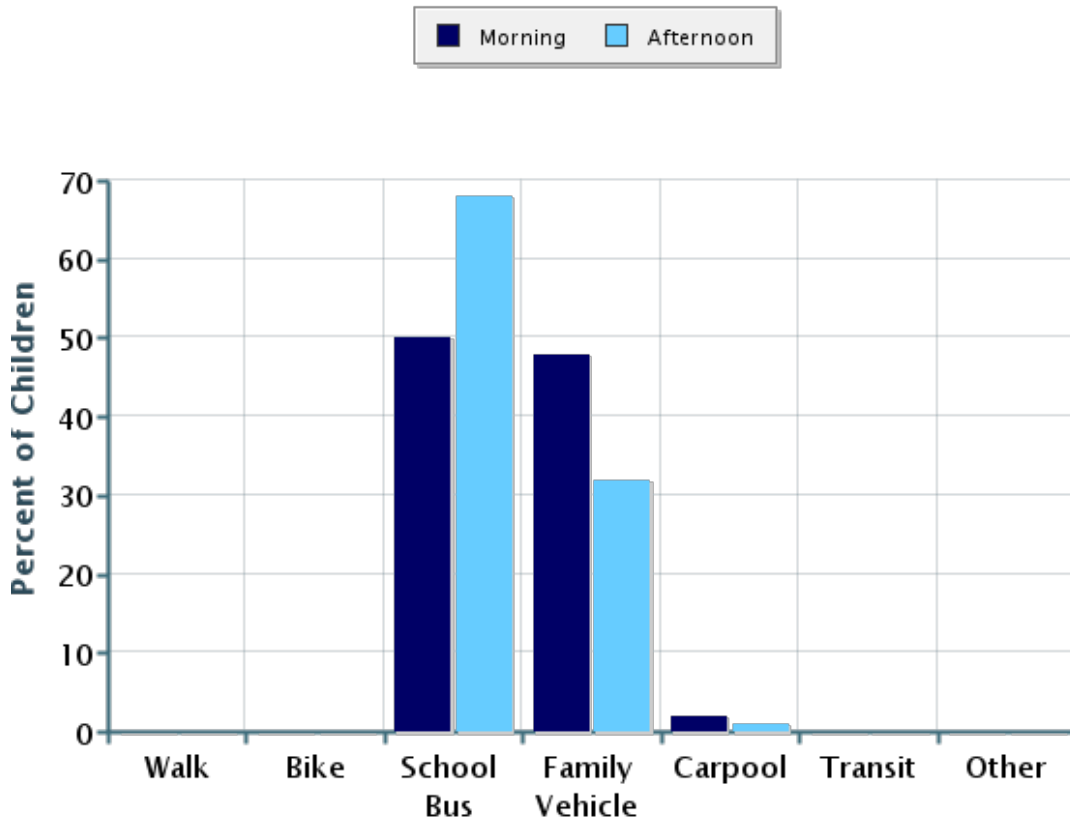
Parent estimate of distance from child's home to school

Distance between home and school	Number of children	Percent
Less than 1/4 mile	2	2%
1/4 mile up to 1/2 mile	1	1%
1/2 mile up to 1 mile	5	4%
1 mile up to 2 miles	14	12%
More than 2 miles	92	81%

Don't know or No response: 2

Percentages may not total 100% due to rounding.

Typical mode of arrival at and departure from school



Typical mode of arrival at and departure from school

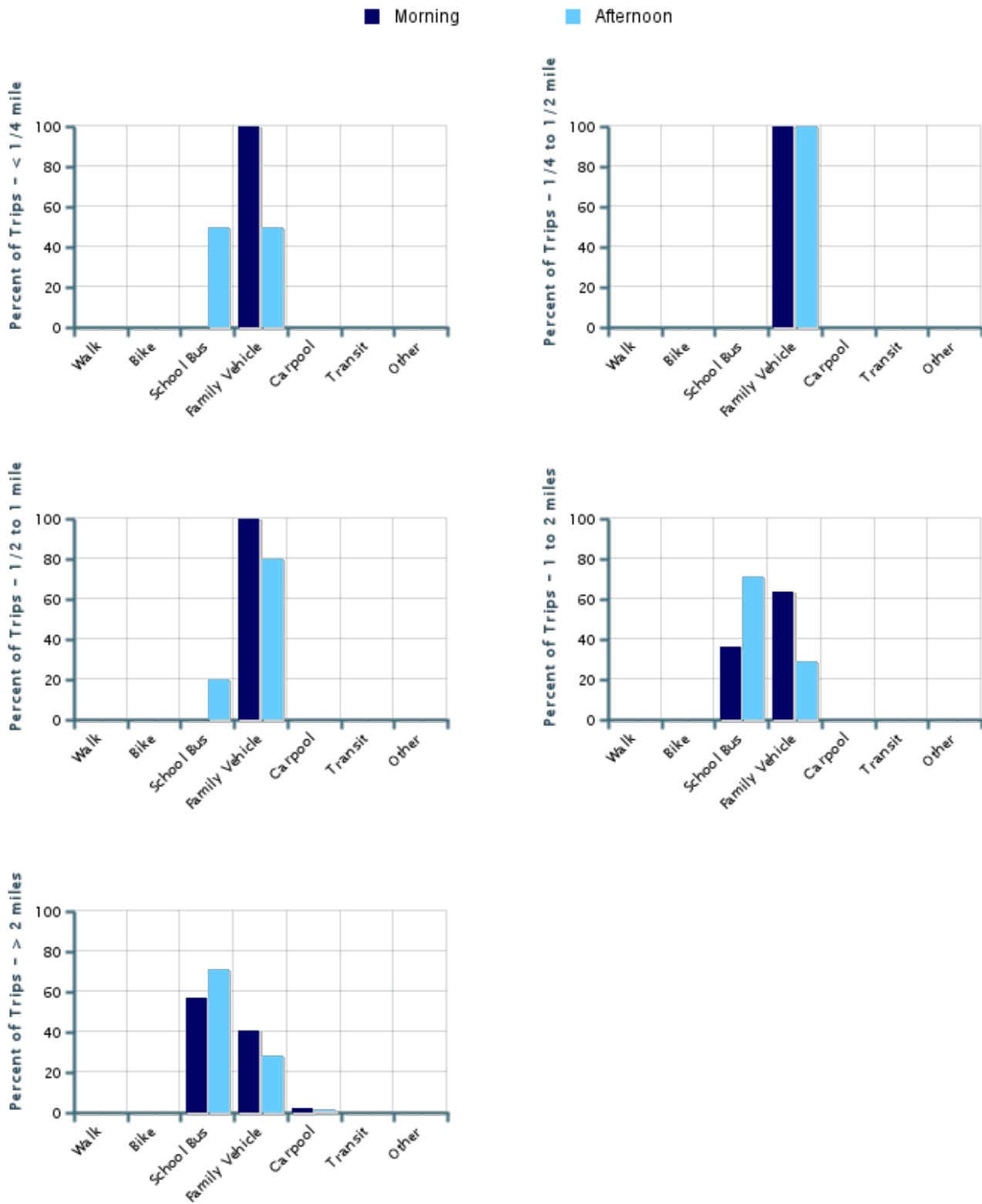
Time of Trip	Number of Trips	Walk	Bike	School Bus	Family Vehicle	Carpool	Transit	Other
Morning	114	0%	0%	50%	48%	2%	0%	0%
Afternoon	114	0%	0%	68%	32%	0.9%	0%	0%

No Response Morning: 2

No Response Afternoon: 2

Percentages may not total 100% due to rounding.

Typical mode of school arrival and departure by distance child lives from school



Typical mode of school arrival and departure by distance child lives from school

School Arrival

Distance	Number within Distance	Walk	Bike	School Bus	Family Vehicle	Carpool	Transit	Other
Less than 1/4 mile	2	0%	0%	0%	100%	0%	0%	0%
1/4 mile up to 1/2 mile	1	0%	0%	0%	100%	0%	0%	0%
1/2 mile up to 1 mile	5	0%	0%	0%	100%	0%	0%	0%
1 mile up to 2 miles	14	0%	0%	36%	64%	0%	0%	0%
More than 2 miles	90	0%	0%	57%	41%	2%	0%	0%

Don't know or No response: 4

Percentages may not total 100% due to rounding.

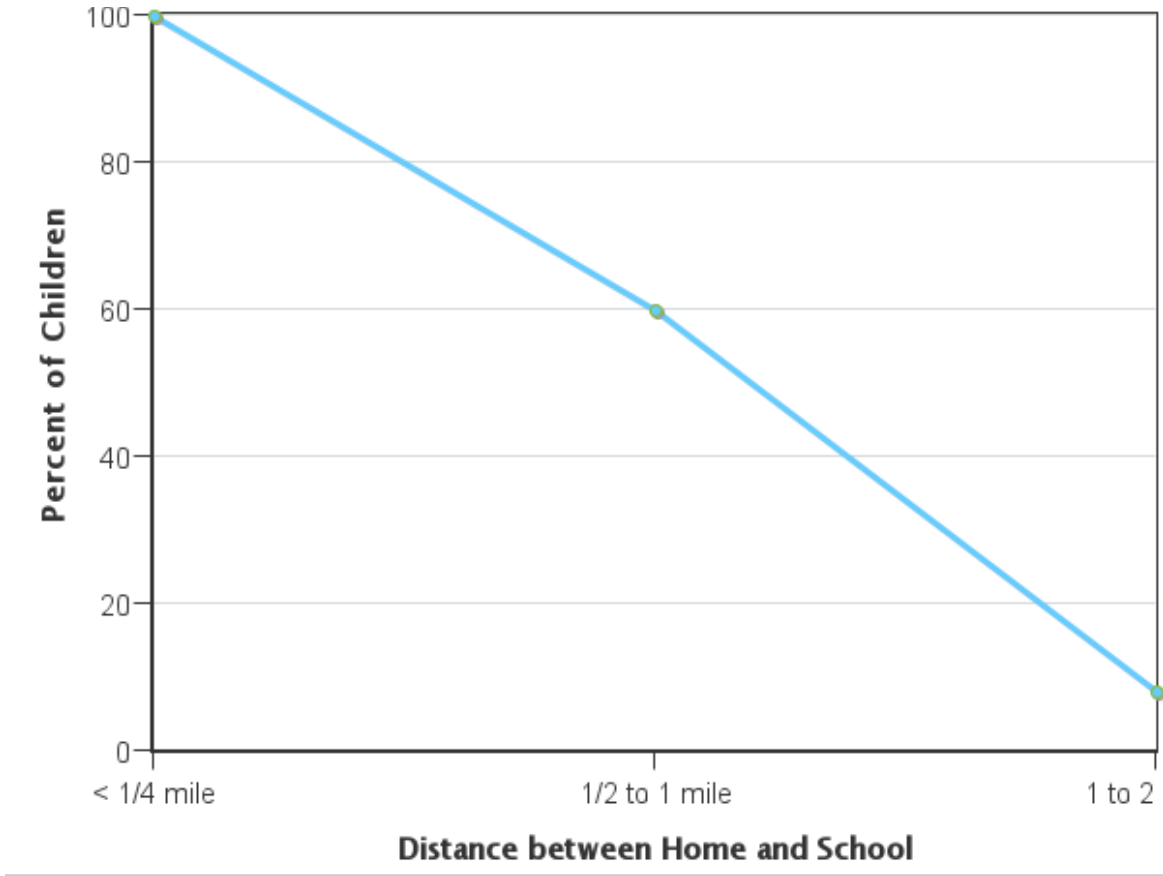
School Departure

Distance	Number within Distance	Walk	Bike	School Bus	Family Vehicle	Carpool	Transit	Other
Less than 1/4 mile	2	0%	0%	50%	50%	0%	0%	0%
1/4 mile up to 1/2 mile	1	0%	0%	0%	100%	0%	0%	0%
1/2 mile up to 1 mile	5	0%	0%	20%	80%	0%	0%	0%
1 mile up to 2 miles	14	0%	0%	71%	29%	0%	0%	0%
More than 2 miles	90	0%	0%	71%	28%	1%	0%	0%

Don't know or No response: 4

Percentages may not total 100% due to rounding.

Percent of children who have asked for permission to walk or bike to/from school by distance they live from school

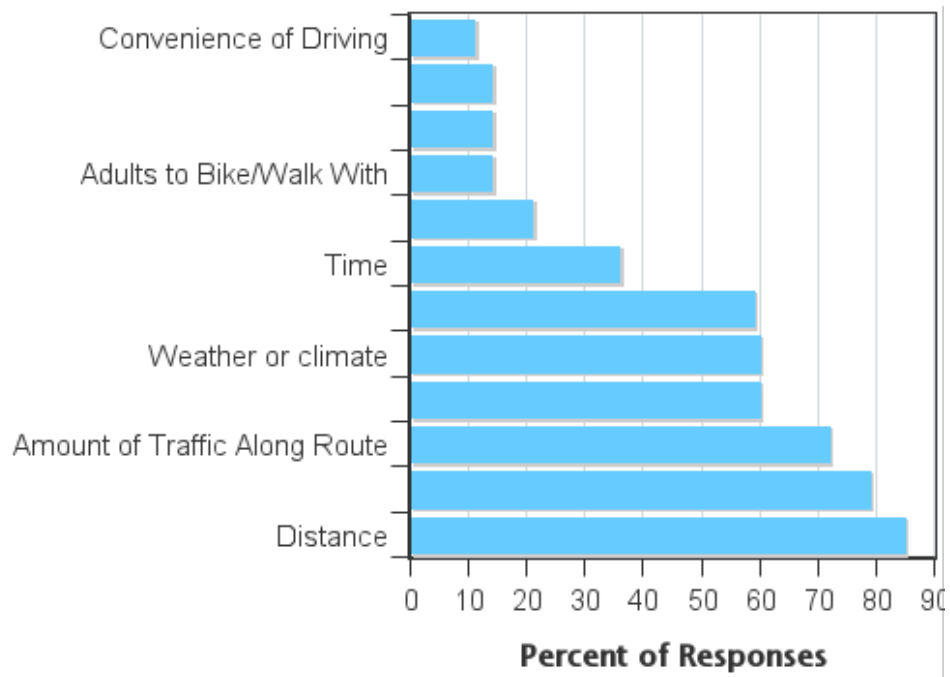


Percent of children who have asked for permission to walk or bike to/from school by distance they live from school

Asked Permission?	Number of Children	Less than 1/4 mile	1/4 mile up to 1/2 mile	1/2 mile up to 1 mile	1 mile up to 2 miles	More than 2 miles
Yes	5	100%	0%	60%	8%	0%
No	104	0%	100%	40%	92%	100%

Don't know or No response: 7
 Percentages may not total 100% due to rounding.

Issues reported to affect the decision to not allow a child to walk or bike to/from school by parents of children who do not walk or bike to/from school



Issues reported to affect the decision to allow a child to walk or bike to/from school by parents of children who already walk or bike to/from school

Issue	Child does not walk/bike to school	Child walks/bikes to school
Distance	85%	0
Speed of Traffic Along Route	79%	0
Amount of Traffic Along Route	72%	0
Sidewalks or Pathways	60%	0
Weather or climate	60%	0
Safety of Intersections and Crossings	59%	0
Time	36%	0
Violence or Crime	21%	0
Adults to Bike/Walk With	14%	0
Crossing Guards	14%	0
Child's Participation in After School Programs	14%	0
Convenience of Driving	11%	0
Number of Respondents per Category	85	0

No response: 31

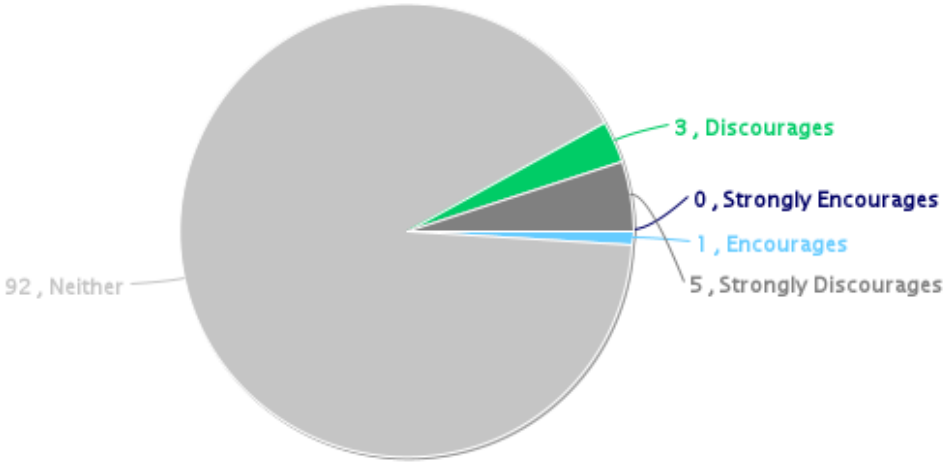
Note:

--Factors are listed from most to least influential for the 'Child does not walk/bike to school' group.

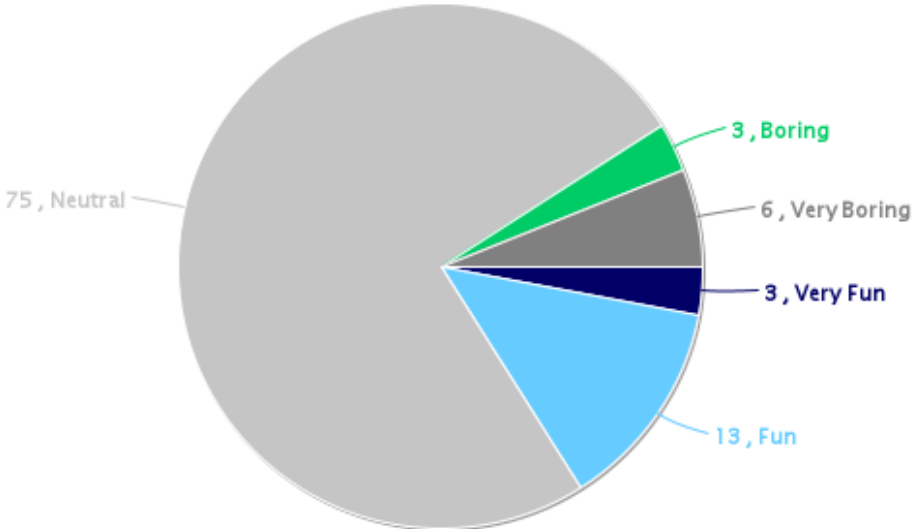
--Each column may sum to > 100% because respondent could select more than issue

--The calculation used to determine the percentage for each issue is based on the 'Number of Respondents per Category' within the respective columns (Child does not walk/bike to school and Child walks/bikes to school.) If comparing percentages between the two columns, please pay particular attention to each column's number of respondents because the two numbers can differ dramatically.

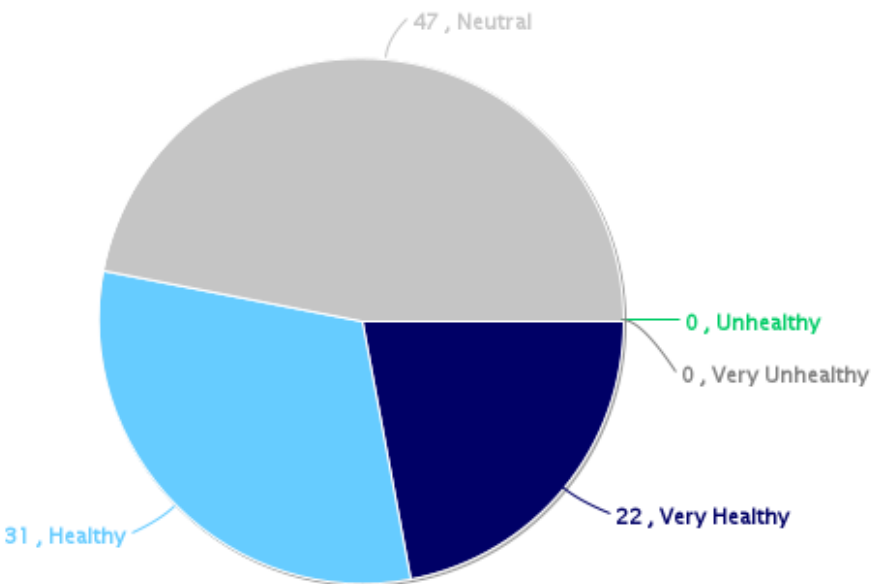
Parents' opinions about how much their child's school encourages or discourages walking and biking to/from school



Parents' opinions about how much fun walking and biking to/from school is for their child



Parents' opinions about how healthy walking and biking to/from school is for their child



Comments Section

SurveyID	Comment
1724237	Hwy P is very busy, It's ashame that it prevents my child from walking to school.
1724168	My child lives to far away school is off a country road
1724141	Violence or crime: don't trust anyone I don't know with my kids.
1724167	We live too far away for child to walk/ride bike. If we were closer, with less traffic from school would be allowed.
1724171	Depends on child. Some are more responsible than others. Traffic is another concern. Are parents home? are parents responsible?
1724212	I'm very disappointed the school bus won't pick up/drop off at our home - even though we are a mile away from the nearest bus stop (which is on a highway).
1724217	I have seen the way a lot of motorists are using cell phones while driving and I do not trust that people will pay attention
1724180	We are too far away to bike or walk to school. Plus it would be along hwy 17
1724219	Walking or biking on Hwy C would be too dangerous.
1724232	I'm very disappointed the school bus won't drop off at our home. Even though we are a mile away from the nearest bus stop (which is on a highway)
1724240	Question 12 - not sure Question 13 - it would depend on weather Question 14 - obviously walking/biking is healthier than riding bus/getting ride.
1724135	I don't feel it would be safe with the dump trucks on N. Faust Lake Rd from County Concrete Corp. or crossing Hwy P
1724137	We chose to drive due unsafe bus stops
1724160	We live too far away
1724234	Survey is not designed well. Many people in our district commute because of the geological size of it.
1724236	We are too far away to bike or walk to school. Plus it would be along Hwy 17
1724243	I feel that the bus drop/pickup and parent drop pick up should be switched so there is no pedestrian cross walk especially when trying to drop off in am.
1724139	My child is to young for the distance we live.
1724151	A bike route for our children would include crossing a highway & bypass with busy traffic.
1724157	We live 6 miles away from the school & the main road to get the (County Rd C) is a 55mph road w/two lanes & no sidewalks or bike lanes. I don't think it is ever likely our child would walk or bike to school.
1724189	We live too far from school for me to ever let my child walk or ride a bike.
1724244	The road isn't wide enough for foot/bike traffic. There aren't any lights to cross at safely. I would not feel comfortable sending my kids alone.
1724143	Answers to 13 & 14 would be N/A if was an option.
1724150	Weird survey for people not close to school - if we lived by school, yes the kids might walk or bike
1724166	We are too far away to bike or walk to school. Plus it would be along Hwy 17
1724176	We live out of town. Walking or biking is not feasible.
1724183	We live over 7 miles from the school. Too far to walk/bike.
1724130	We live 11 miles from the school.
1724192	Walking or biking is not an option because of shear distance.

1724238	My child isn't walking or biking to school. We live 15 miles away. We live out in sticks
1724142	We live to far from school for any type of biking or walking
1724200	We live too far from school for any type of biking or walking.