

Parent Survey Report: One School in One Data Collection Period

School Name: Marathon Area Elementary

School Group: Marathon

School Enrollment: 165

% Range of Students Involved in SRTS: Not Applicable

Number of Questionnaires Distributed: 84

Set ID: 20613

Month and Year Collected: November 2023

Date Report Generated: 04/23/2024

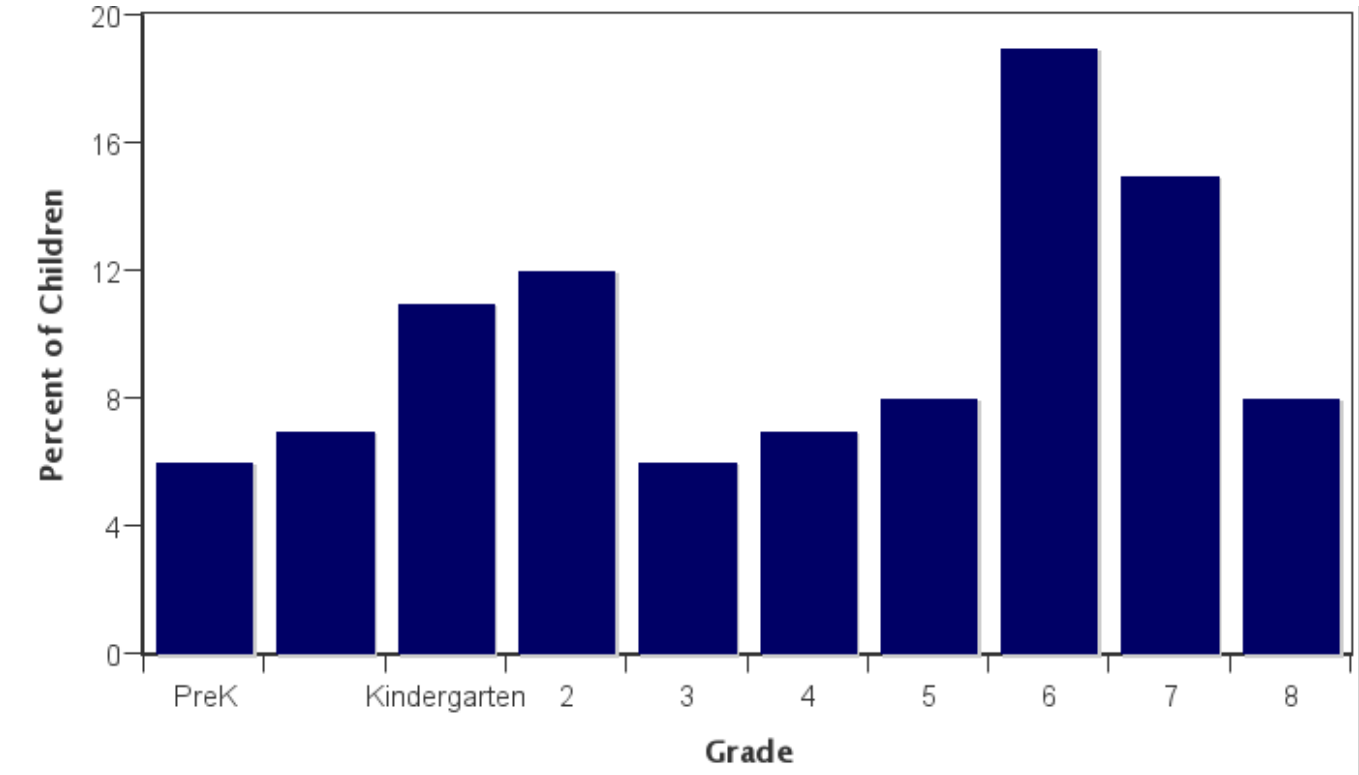
Tags:

Number of Questionnaires

Analyzed for Report: 84

This report contains information from parents about their children's trip to and from school. The report also reflects parents' perceptions regarding whether walking and bicycling to school is appropriate for their child. The data used in this report were collected using the Survey about Walking and Biking to School for Parents form from the National Center for Safe Routes to School.

Grade levels of children represented in survey



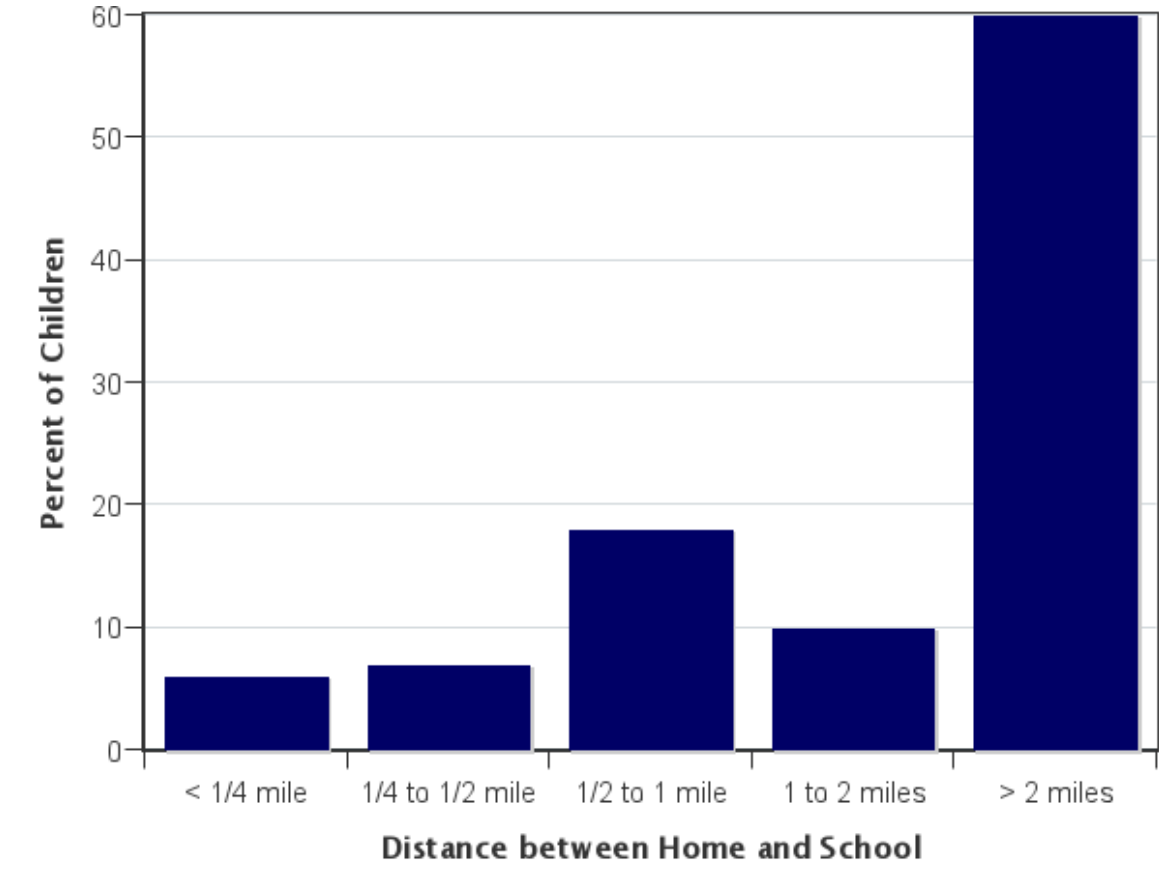
Grade levels of children represented in survey

Grade in School	Responses per grade	
	Number	Percent
PreK	5	6%
Kindergarten	6	7%
1	9	11%
2	10	12%
3	5	6%
4	6	7%
5	7	8%
6	16	19%
7	13	15%
8	7	8%

No response: 0

Percentages may not total 100% due to rounding.

Parent estimate of distance from child's home to school



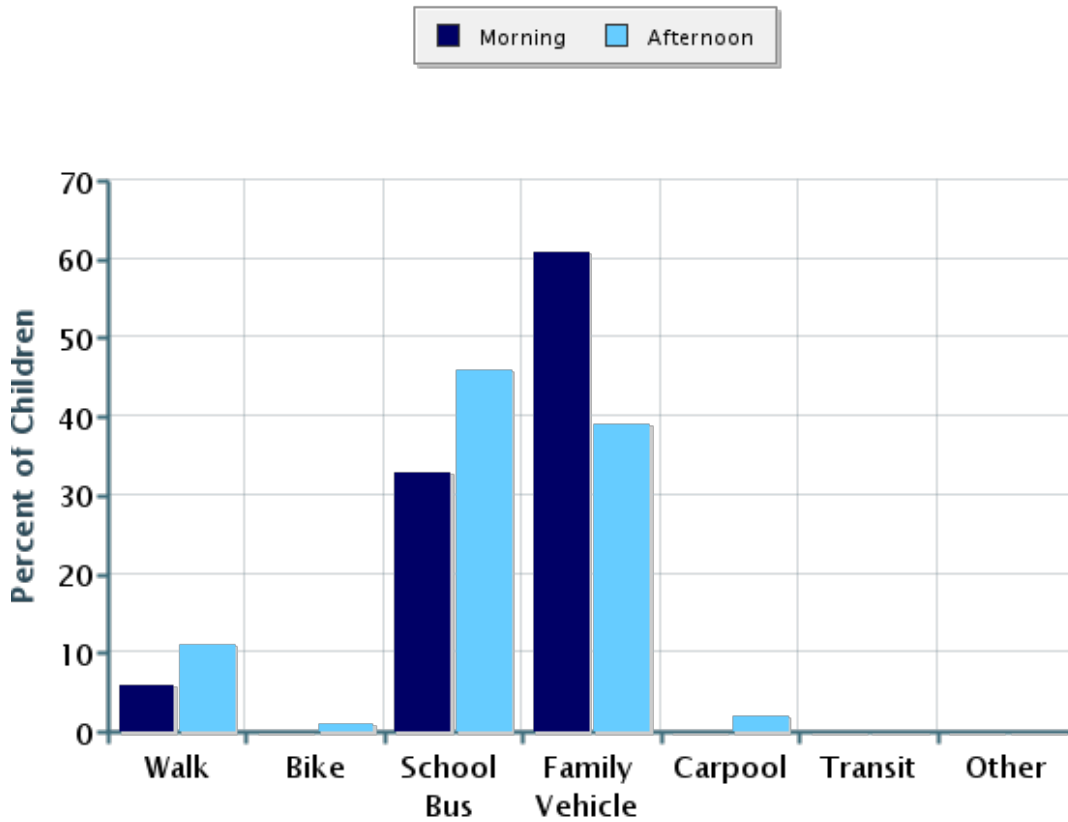
Parent estimate of distance from child's home to school

Distance between home and school	Number of children	Percent
Less than 1/4 mile	5	6%
1/4 mile up to 1/2 mile	6	7%
1/2 mile up to 1 mile	15	18%
1 mile up to 2 miles	8	10%
More than 2 miles	50	60%

Don't know or No response: 0

Percentages may not total 100% due to rounding.

Typical mode of arrival at and departure from school



Typical mode of arrival at and departure from school

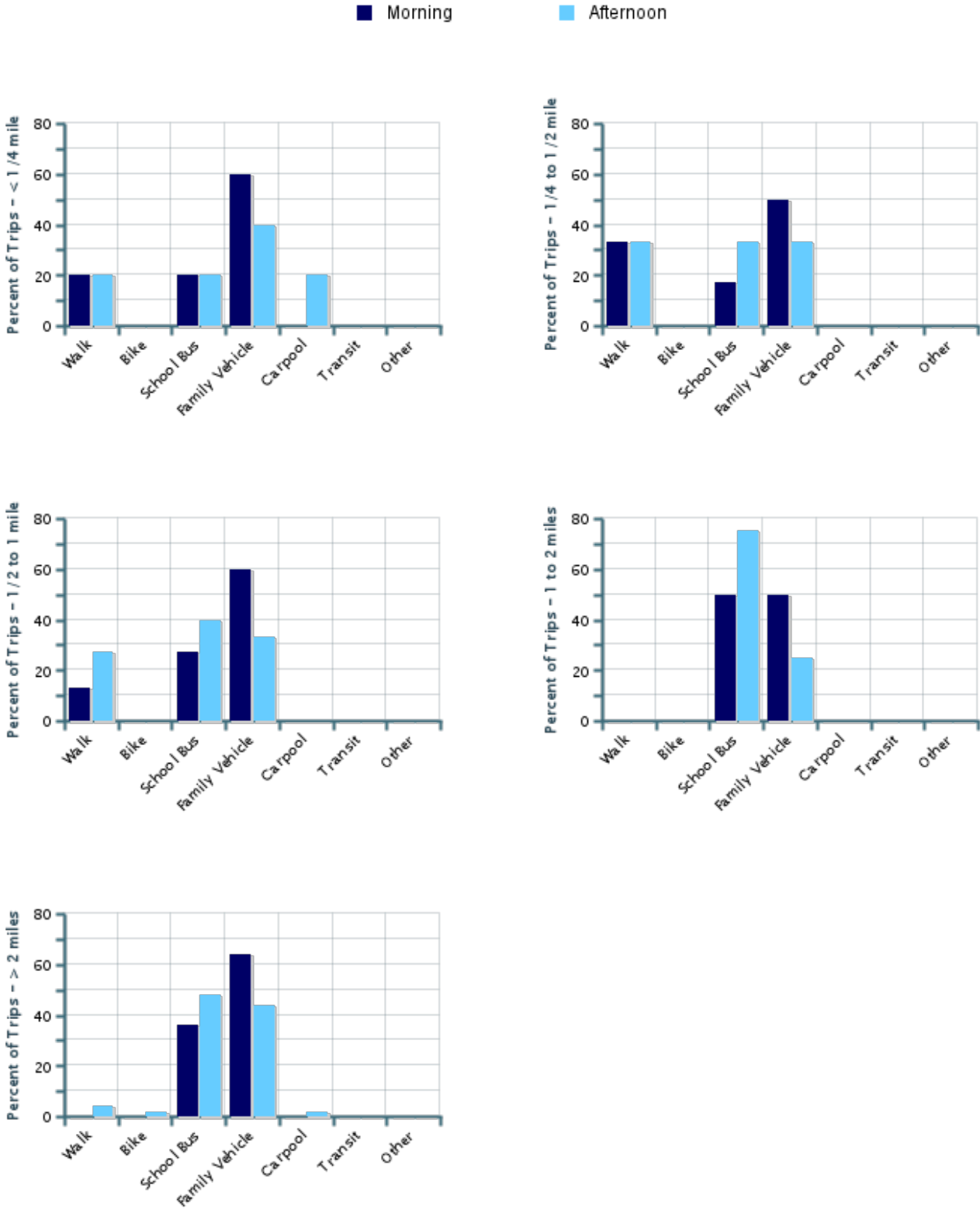
Time of Trip	Number of Trips	Walk	Bike	School Bus	Family Vehicle	Carpool	Transit	Other
Morning	84	6%	0%	33%	61%	0%	0%	0%
Afternoon	84	11%	1%	46%	39%	2%	0%	0%

No Response Morning: 0

No Response Afternoon: 0

Percentages may not total 100% due to rounding.

Typical mode of school arrival and departure by distance child lives from school



Typical mode of school arrival and departure by distance child lives from school

School Arrival

Distance	Number within Distance	Walk	Bike	School Bus	Family Vehicle	Carpool	Transit	Other
Less than 1/4 mile	5	20%	0%	20%	60%	0%	0%	0%
1/4 mile up to 1/2 mile	6	33%	0%	17%	50%	0%	0%	0%
1/2 mile up to 1 mile	15	13%	0%	27%	60%	0%	0%	0%
1 mile up to 2 miles	8	0%	0%	50%	50%	0%	0%	0%
More than 2 miles	50	0%	0%	36%	64%	0%	0%	0%

Don't know or No response: 0

Percentages may not total 100% due to rounding.

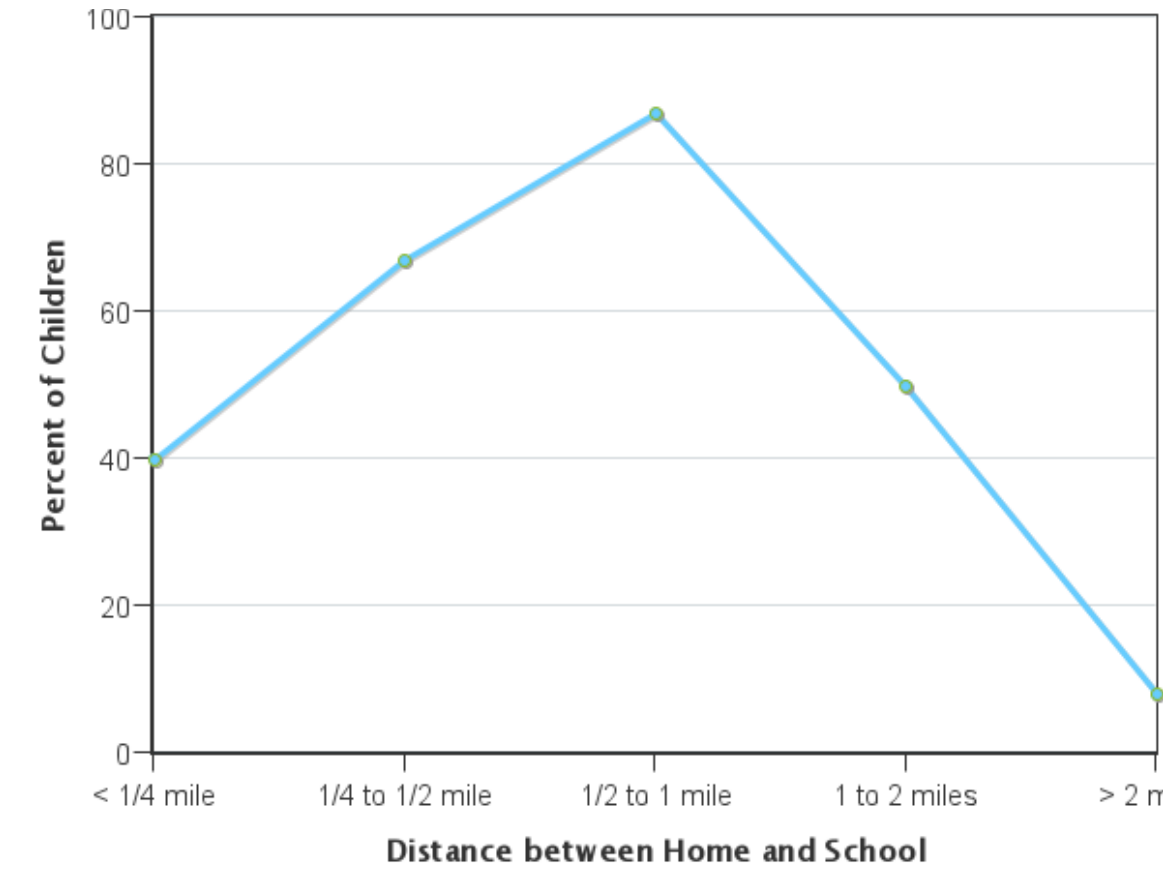
School Departure

Distance	Number within Distance	Walk	Bike	School Bus	Family Vehicle	Carpool	Transit	Other
Less than 1/4 mile	5	20%	0%	20%	40%	20%	0%	0%
1/4 mile up to 1/2 mile	6	33%	0%	33%	33%	0%	0%	0%
1/2 mile up to 1 mile	15	27%	0%	40%	33%	0%	0%	0%
1 mile up to 2 miles	8	0%	0%	75%	25%	0%	0%	0%
More than 2 miles	50	4%	2%	48%	44%	2%	0%	0%

Don't know or No response: 0

Percentages may not total 100% due to rounding.

Percent of children who have asked for permission to walk or bike to/from school by distance they live from school



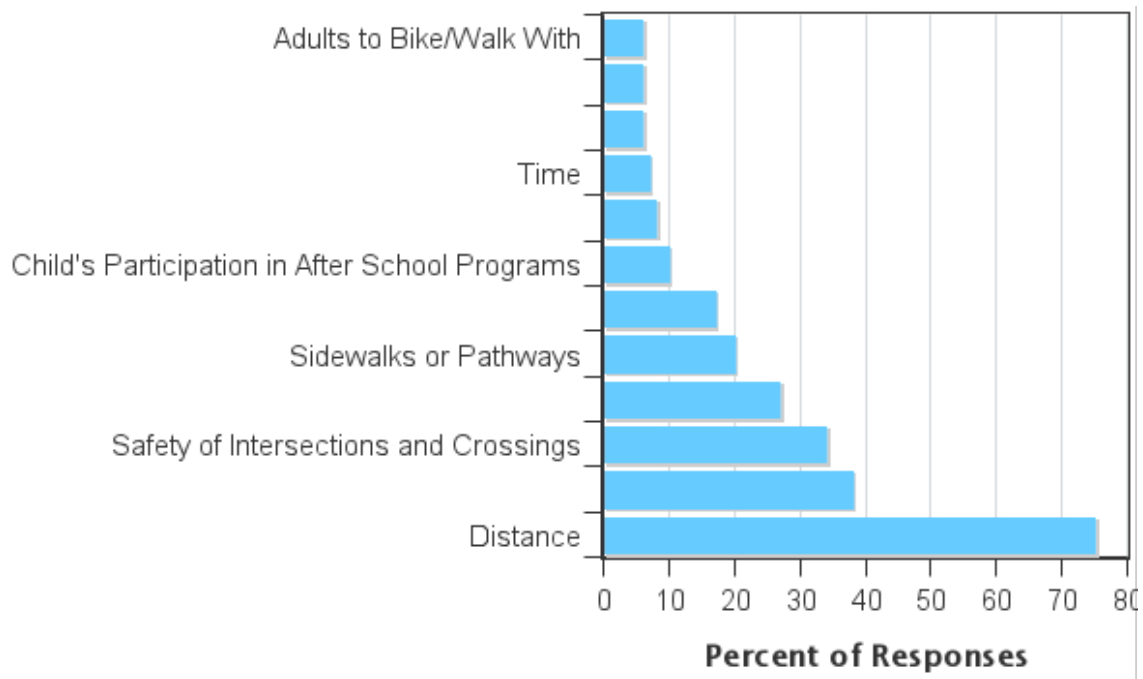
Percent of children who have asked for permission to walk or bike to/from school by distance they live from school

Asked Permission?	Number of Children	Less than 1/4 mile	1/4 mile up to 1/2 mile	1/2 mile up to 1 mile	1 mile up to 2 miles	More than 2 miles
Yes	27	40%	67%	87%	50%	8%
No	56	60%	33%	13%	50%	92%

Don't know or No response: 1

Percentages may not total 100% due to rounding.

Issues reported to affect the decision to not allow a child to walk or bike to/from school by parents of children who do not walk or bike to/from school



Issues reported to affect the decision to allow a child to walk or bike to/from school by parents of children who already walk or bike to/from school

Issue	Child does not walk/bike to school	Child walks/bikes to school
Distance	75%	0
Amount of Traffic Along Route	38%	0
Safety of Intersections and Crossings	34%	0
Speed of Traffic Along Route	27%	0
Sidewalks or Pathways	20%	0
Weather or climate	17%	0
Child's Participation in After School Programs	10%	0
Convenience of Driving	8%	0
Time	7%	0
Violence or Crime	6%	0
Crossing Guards	6%	0
Adults to Bike/Walk With	6%	0
Number of Respondents per Category	71	0

No response: 13

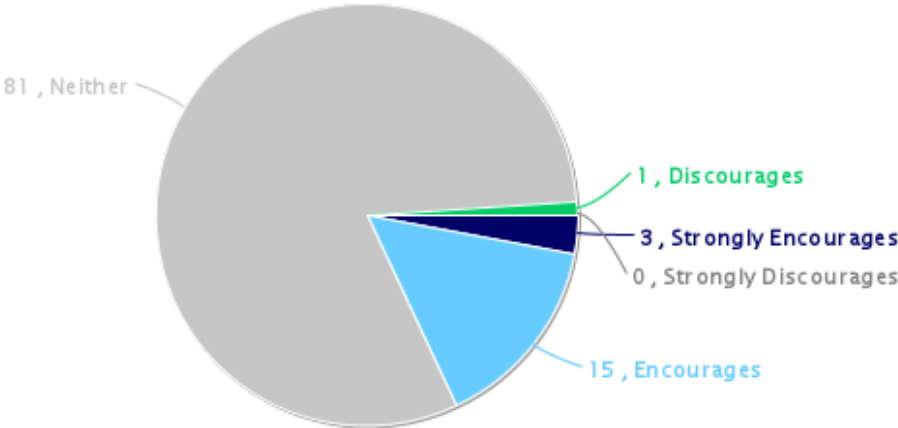
Note:

--Factors are listed from most to least influential for the 'Child does not walk/bike to school' group.

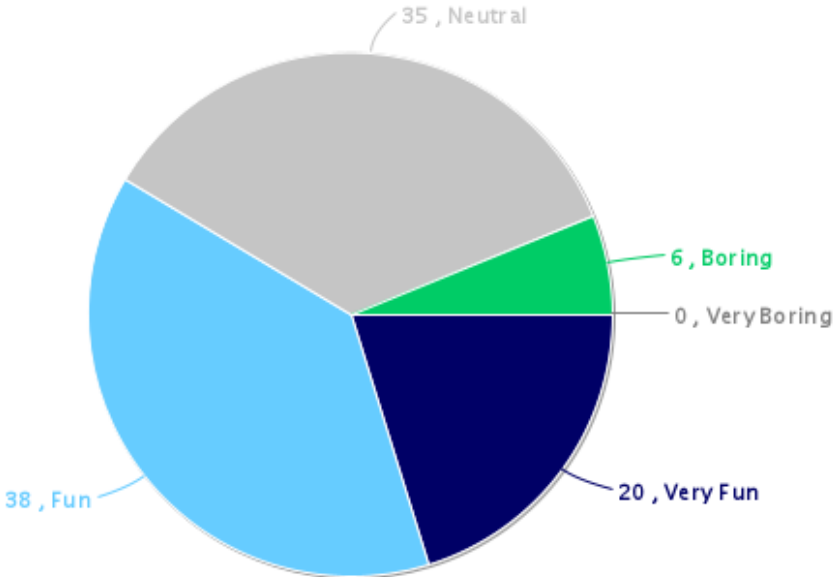
--Each column may sum to > 100% because respondent could select more than issue

--The calculation used to determine the percentage for each issue is based on the 'Number of Respondents per Category' within the respective columns (Child does not walk/bike to school and Child walks/bikes to school.) If comparing percentages between the two columns, please pay particular attention to each column's number of respondents because the two numbers can differ dramatically.

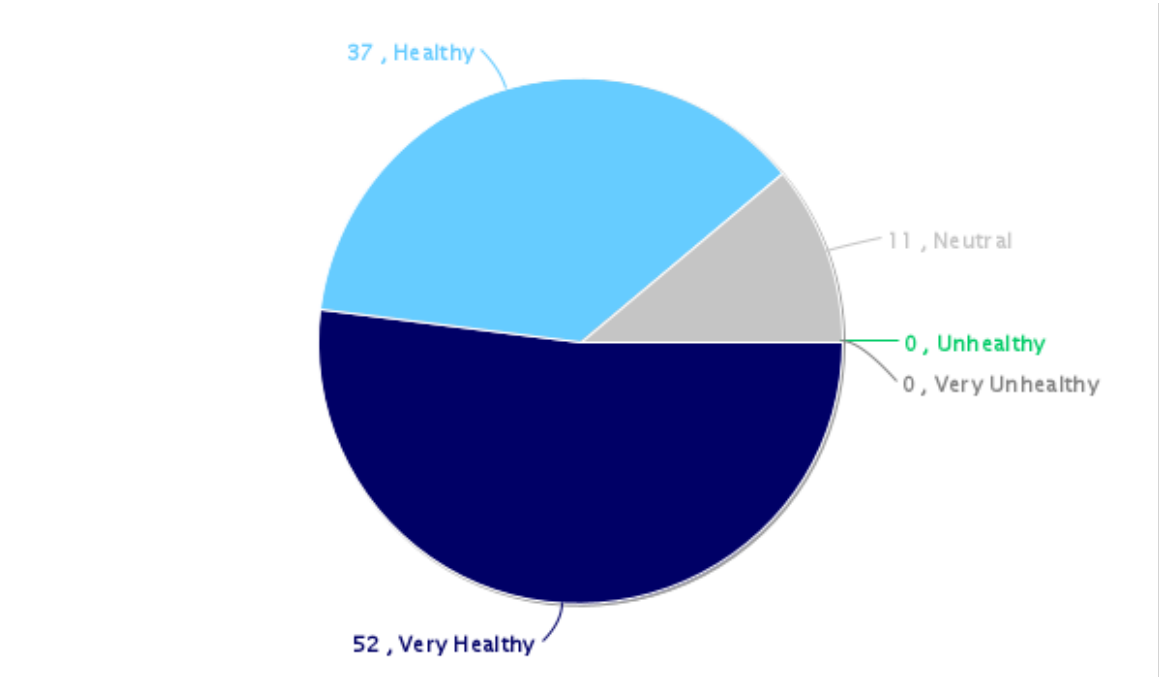
Parents' opinions about how much their child's school encourages or discourages walking and biking to/from school



Parents' opinions about how much fun walking and biking to/from school is for their child



Parents' opinions about how healthy walking and biking to/from school is for their child



Comments Section

SurveyID	Comment
1733743	My children would have to cross main street to get to and from school each day. There are a lot of heavy machinery type vehicles that use this route that are important to the economy of Marathon. They drive way too fast and my fear is that my child would be hit while crossing a street so we don't let them walk or bike to school mainly because of this factor.
1733747	Biggest concern is children crossing hwy 107/main st
1733751	Why do you not feel comfortable allowing your child to walk or bike at any grade? Too far
1733762	If we did live at a distance where walking/ biking was an option, I personally wouldn't let my child (alone) until a much older age. Marathon seems to be very busy before and after school with school pick up and drop off, factories getting off work. I dont feel comfortable leaving the saftey of my child in the hands of someone driving on the streets.
1733772	We live on the edge of town and we have no sidewalks for many blocks. The other huge issue is crossing Main Street is horrible in the morning.
1733774	What does the highest grade or year of school that I may have completed jabe anything to do with my child walking or riding a bike to school? This survey seems like a waste of time?
1733775	Why do you not feel comfortable allowing your child to walk or bike at any grade? We open enrolled and live in another town
1733791	Busing is best for my family. Marathon is a very hilly city which deters my children was at least wanting to walk home.
1733794	Why do you not feel comfortable allowing your child to walk or bike at any grade? We live too far from school and on a busy county road.
1733796	Why do you not feel comfortable allowing your child to walk or bike at any grade? We live 8 miles from school.
1733806	Why do you not feel comfortable allowing your child to walk or bike at any grade? County Roads have too much fast traffic and it would take too long.
1733812	If my children were going to walk to a friends house in town, I'd have no problem with them walking through Marathon. My boys bike through Wausau with no issues. The only reason my boys don't bike or walk home is Wausau is too far away.
1733817	It would be nice if there were sidewalks all the way to school on 4th St.
1733742	Why do you not feel comfortable allowing your child to walk or bike at any grade? We live too far away
1733746	Why do you not feel comfortable allowing your child to walk or bike at any grade? Distance
1733748	I feel anything west of Main street (107) should be able to ride a bus. We live one house east of the cut off and the bus company will not work with us on letting them ride the bus. They could simply walk on house over and get on. I don't like the idea of them crossing main street.
1733750	If we lived in the city my child would walk or bike everyday, however we live in the country so it doesn't work out.
1733758	Students leaving MAES and walking to the high school to meet up with older siblings, parents, or for sports: crossing 4th street at Spring Valley, East, Chestnut, or Hickory is dangerous. There are curves in the road, cars travel at high speeds, and there aren't crosswalks or crossing guards to help students across. Yet I see many students traveling this way on a daily basis. I feel some measures need to be taken to get students a safe and easily accessible route to cross at this location.
1733764	We walk with our children to/from school

1733771	The sidewalks to and from the school are dangerous - some don't exist and the ones that do are broken and don't have ramps at intersections. Also almost all of the intersections do not have stop signs - it's extremely dangerous for walkers/bikers and drivers.
1733776	Cars picking up at the top of the hill create a unsafe environment for people leaving and for kids crossing the roads. Some time they see parked on both sides of the road leaving no room for traffic in the main road and kids darting across to other cars. Pick up in the line or don't pick up.
1733780	My son walks from the elementary school to the high school for sports and weight lifting. I am concerned about the cutting through that occurs in the Marathon Cheese parking lot so that students can get to the high school faster.
1733810	I would feel more safe to let my kids cross main street to bike to school in Marathon if there was one intersection with traffic lights and visuals to show when it is safe to cross the street.
1733823	I believe better street lighting needs to put up out in front of the swim center and MAES. After dark, both locations are very dangerous and hard for kids to find their parents' vehicles.
1733773	Why do you not feel comfortable allowing your child to walk or bike at any grade? WE live too far away.
1733790	Why do you not feel comfortable allowing your child to walk or bike at any grade? Distance from school is too far, all travel is on busy highways too.
1733795	my child gets dropped off at school and then after school they usually walk to the city library to wait to be picked up later.
1733756	Why do you not feel comfortable allowing your child to walk or bike at any grade? We live 5 miles away and on a county highway with traffic concerns
1733761	Why do you not feel comfortable allowing your child to walk or bike at any grade? Distance