

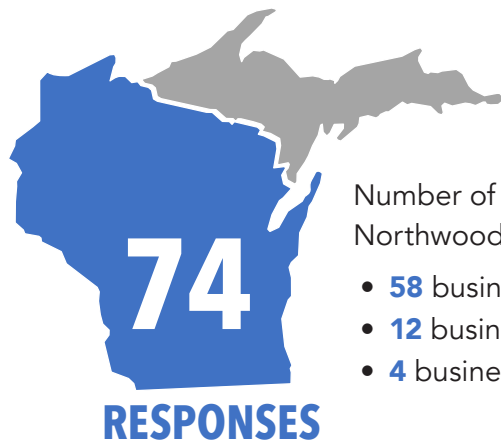
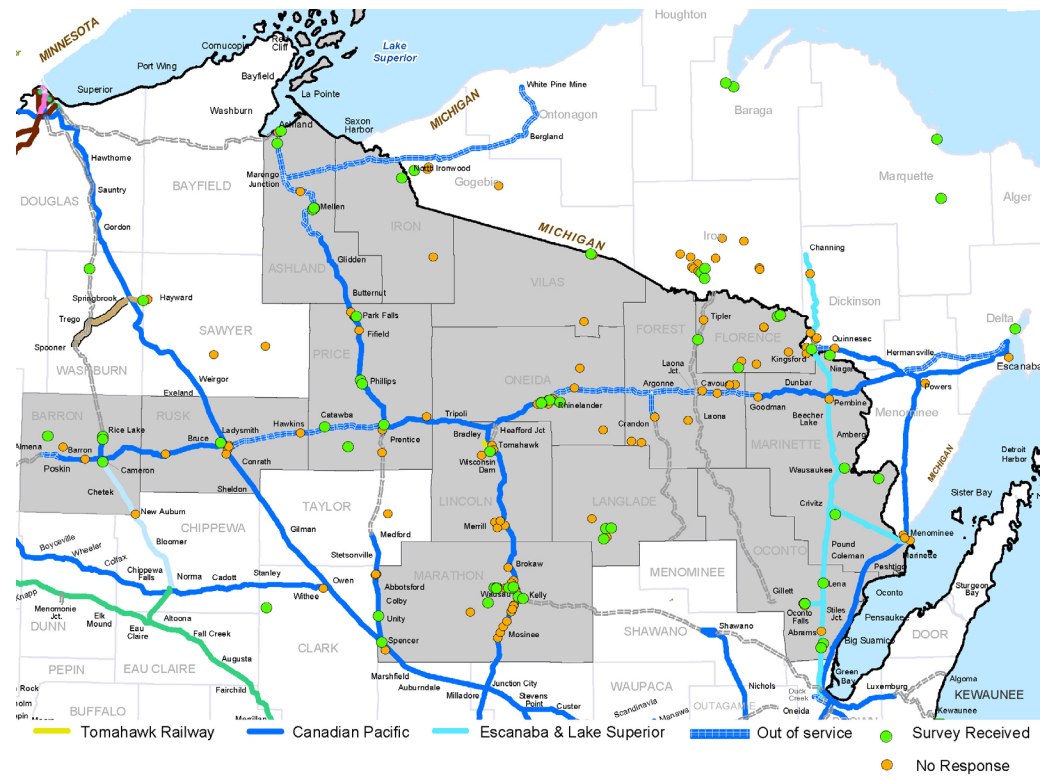
# NORTHWOODS FREIGHT RAIL STUDY

## BY THE NUMBERS

The Wisconsin Northwoods Freight Market Study survey collected data from Northern Wisconsin and the Upper Peninsula of Michigan.



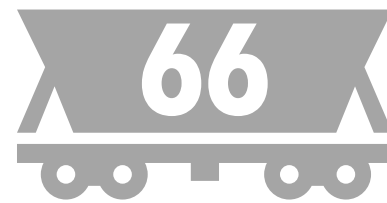
**200** Number of businesses that were sent the survey.



Number of business responses for the 2017 Northwoods Freight Rail Study.

- 58 businesses from Wisconsin
- 12 businesses from northern Michigan
- 4 businesses from unknown locations

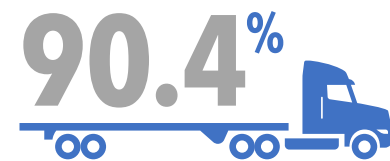
**10** Number of businesses that responded to both 2013 and 2017 surveys and indicated they shipped/received freight via rail.



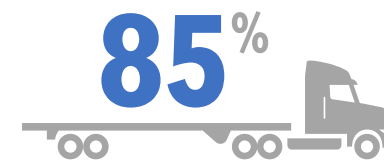
Number of businesses that ship/receive freight via rail in either 2013 or 2017.



Number of additional businesses that ship/receive freight via rail from the 2017 study survey.

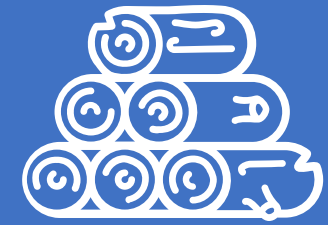


of surveyed businesses use hired trucks to haul their products.



Total weight by volume by truck

FROM THE 41 BUSINESSES WHO SHIP LOGS/WOOD



# LOGS/WOOD

were the number one shipped/received commodity by weight via rail in 2013 and 2017 surveys. Over 10.5 million tons of logs/wood are shipped annually by the 41 businesses.

Metals, steel, and aluminum products ranked number two in both imports and exports.



**18,557**

Number of rail cars respondents are currently shipping/receiving per year

**123,775**

Number of rail cars 41 businesses that ship logs, lumber, wood products, or pulp could fill per year.

IF THE 41 BUSINESSES SHIPPED ENTIRELY BY RAIL:

**343,984**

Number of semi-truck loads that could be removed from Wisconsin Roads annually.\*

**105,218**

Number of additional rail car loads that could be added to the rail system annually — just in the logs/wood commodity alone.\*\*

\*For those 41 businesses who ship logs/wood

\*\*Assuming survey results are representative samples